

GD-1340 Fax Unit

Service / Troubleshooting

Manual

Applicable Models

MB760/MB770/MPS5502/MC770/MC780/MPS3537/MPS4242

013119B

TRADEMARKS

- The official name of Windows XP is Microsoft Windows XP Operating System.
- The official name of Windows 7 is Microsoft Windows 7 Operating System.
- The official name of Windows 8 is Microsoft Windows 8 Operating System.
- Microsoft, Windows, Windows NT, Windows Vista and the brand names and product names of other Microsoft products are trademarks or registered trademarks of Microsoft Corporation in the U.S. and/or other countries.
- Apple, AppleTalk, Macintosh, and Mac are trademarks of Apple Inc. in the U.S. and other countries.
- PostScript is a trademark of Adobe Systems Incorporated.
- NOVELL, NetWare, and NDS are trademarks or registered trademarks of Novell, Inc.
- Other company names and product names in this manual are the trademarks of their respective companies.

© 2013 OKI DATA CORPORATION All rights reserved

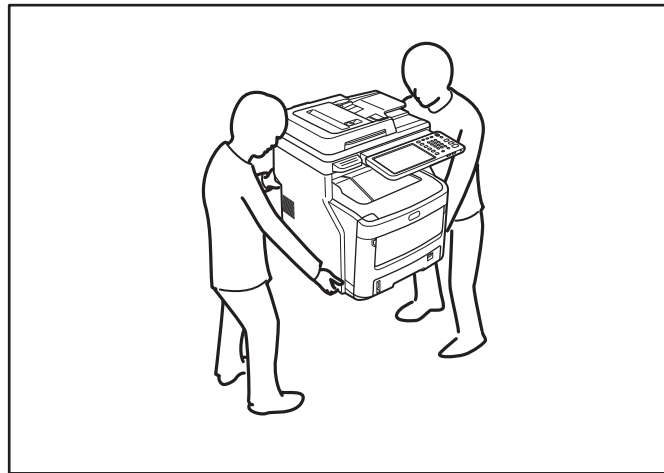
Under the copyright laws, this manual cannot be reproduced in any form without prior written permission of OKI DATA CORPORATION.

GENERAL PRECAUTIONS REGARDING THE SERVICE FOR GD-1340

The installation and service shall be done by a qualified service technician.

1) Transportation/Installation

- When transporting/installing the equipment, employ two or more persons and be sure to hold the positions as shown in the figure. The equipment is quite heavy and weighs approximately 60 kg (132.27 lb.) (MC770 series (Color MFP's); including the finisher) / approximately 55 kg (121.23 lb.) (MB770 series (Mono MFP's); including the finisher), therefore pay full attention when handling it.



- Be sure not to hold the movable parts or units (e.g. the control panel, ADU or RADF) when transporting the equipment.
- Be sure to use a dedicated outlet with AC 110 V / 13.2 A, 115 V or 127 V / 12 A, 220-240 V / 8 A for its power source.
- The equipment must be grounded for safety.
- Select a suitable place for installation. Avoid excessive heat, high humidity, dust, vibration and direct sunlight.
- To insure adequate working space for the copying operation, keep a minimum clearance of 30 cm (12") on the left, 30 cm (12") on the right and 60 cm (24") on the rear.
- The equipment shall be installed near the socket outlet and shall be accessible.
- Be sure to fix and plug in the power cable securely after the installation so that no one trips over it.
- If the caster is installed, lock the casters after setting up the product.

2) General Precautions at Service

- Be sure to turn the power OFF and unplug the power cable during service (except for the service should be done with the power turned ON).
- Unplug the power cable and clean the area around the prongs of the plug and socket outlet once a year or more. A fire may occur when dust lies on this area.
- When the parts are disassembled, reassembly is the reverse of disassembly unless otherwise noted in this manual or other related documents. Be careful not to install small parts such as screws, washers, pins, E-rings, star washers, harnesses in the wrong places.
- Basically, the equipment should not be operated with any parts removed or disassembled.

- The PC board must be stored in an anti-electrostatic bag and handled carefully using a wristband since the ICs on it may be damaged due to static electricity.

Caution: Before using the wristband, unplug the power cable of the equipment and make sure that there are no charged objects which are not insulated in the vicinity.

- Be sure not to touch high-temperature sections such as the fuser unit and areas around them.
- Be sure not to touch high-voltage sections such as the chargers, transfer belt, developer, high-voltage transformer and power supply unit. Especially, the board of these components should not be touched since the electric charge may remain in the capacitors, etc. on them even after the power is turned OFF.
- Make sure that the equipment will not operate before touching potentially dangerous places (e.g. rotating/operating sections such as gears, belts pulleys and fans).
- Be careful when removing the covers since there might be the parts with very sharp edges underneath.
- When servicing the equipment with the power turned ON, be sure not to touch live sections and rotating/operating sections.
- Use designated jigs and tools.
- Use recommended measuring instruments or equivalents.
- Return the equipment to the original state and check the operation when the service is finished.
- Be very careful to treat the touch panel gently and never hit it. Breaking the surface could cause malfunctions.

3) Important Service Parts for Safety

- The door switch, fuse, thermostat, thermofuse, thermistor, batteries, IC-RAMs including lithium batteries, etc. are particularly important for safety. Be sure to handle/install them properly. If these parts are short-circuited and their functions become ineffective, they may result in fatal accidents such as burnout. Do not allow a short-circuit and do not use the parts not recommended by Okidata.

4) Cautionary Labels

- During servicing, be sure to check the rating plate and cautionary labels such as "Unplug the power cable during service", "CAUTION. HOT", "CAUTION. HIGH VOLTAGE", etc. to see if there is any dirt on their surface and if they are properly stuck to the equipment.

5) Disposal of the Equipment, Supplies, Packing Materials, Used Batteries and IC-RAMs

- Regarding the recovery and disposal of the equipment, supplies, packing materials, used batteries and IC-RAMs including lithium batteries, follow the relevant local regulations or rules.

Caution:

Dispose of used batteries and IC-RAMs including lithium batteries according to this manual.

Attention:

Se débarrasser de batteries et IC-RAMs usés y compris les batteries en lithium selon ce manuel.

Vorsicht:

Entsorgung der gebrauchten Batterien und IC-RAMs (inclusive der Lithium-Batterie) nach diesem Handbuch.

CONTENTS

| | |
|--|------------|
| 1. ERROR CODES | 1-1 |
| 1.1 Transmission/Reception Journal and Error Code List | 1-1 |
| 1.2 Error Messages | 1-4 |
| 2. SELF-DIAGNOSIS MODE | 2-1 |
| 2.1 Test Mode (03) | 2-2 |
| 2.2 Adjustment Mode (05) | 2-4 |
| 2.3 Setting Mode (08) | 2-6 |
| 2.4 Function Mode (13)..... | 2-8 |
| 2.5 FAX Clearing Mode (1*)..... | 2-66 |
| 3. TROUBLESHOOTING | 3-1 |
| 3.1 Diagnosis Over Telephone | 3-1 |
| 3.2 Recommend Flow Chart for Field Service | 3-2 |
| 3.3 Flow Chart for Recommended Telephone Screening..... | 3-3 |
| 3.4 Error Analysis Flow | 3-6 |
| 3.4.1 Self-Diagnosis function | 3-6 |
| 3.4.2 Precautions for diagnosis | 3-6 |
| 3.5 Fault Analysis | 3-7 |
| 3.5.1 Power-ON is not possible | 3-7 |
| 3.5.2 Original transport error for RADF | 3-7 |
| 3.5.3 Recording paper transport error | 3-7 |
| 3.5.4 Image trouble | 3-7 |
| 3.5.5 Communication error | 3-8 |
| 3.6 Lists Required at Problem in the Field..... | 3-9 |
| 3.6.1 List printing procedure | 3-9 |
| 3.7 Other Information Required for Error Analysis..... | 3-11 |
| 4. PRECAUTIONS FOR INSTALLATION OF FAX UNIT | 4-1 |
| 4.1 Installation of FAX Unit | 4-1 |
| 4.2 Country/Region Code | 4-2 |
| 5. FIRMWARE UPDATING | 5-1 |

1. ERROR CODES

1.1 Transmission/Reception Journal and Error Code List

The transmission journal is shown below. The error code list and status code list are available in the following pages. The reception journal is output in the same form.

| TRANSMISSION JOURNAL | | | | | | TIME | :MM-DD-YY | TIME |
|----------------------|----------|-------|-------|----------|-----|----------|-----------------|---------------|
| | | | | | | TEL NO.1 | : XXXXXXXXX | |
| | | | | | | NAME | : X X X X X X X | |
| NO. | FILE NO. | DATE | TIMED | DURATION | PGS | TO | DEPT | MODE STATUS |
| 001 | 001 | 12.01 | 09:00 | 00:55 | 2 | ABCDG | | 3 xxx OK xxxx |

Status code ———
 Error code ———

Fig. 1-1

1) Error code list

If an error has occurred during communication, an error code is indicated below "STATUS" on the transmission/reception journal.

Take the appropriate action referring to the following list.


| Error code | Content | Situation and corrective action |
|------------|---|---|
| 0000 | Normal | |
| 0012 | Original jam | Remove the jamming document and retransmit it. |
| 0013 | Door is open | Close the doors securely and retransmit the document. |
| 0020 | Power failure | A power failure occurred during transmission or reception, and the transmission/reception data were lost. Attempt the transmission/reception again. |
| 0030 | Stop by paper jam during the direct transmission | Remove the jamming paper and transmit it. |
| 0033 | Polling error | Polling was not performed because the polling document was not found or the security codes were mismatched. Check the polling document or security code on the other side and attempt the polling again. |
| 0042 | Memory full | The memory became full a memory abnormality occurred during reception. (The pages normally received are printed out.) Check the remaining memory space or memory status, and attempt the reception again. |
| 0050 | Line is busy | Transmission is not made because the line is busy. Attempt the transmission again. As the number of the redialings is increased, the possibility for successful transmission is increased. |
| 0053 | Security mismatch in relay or mail box transmission | Check your security code and system password of the other side as well as your own. |
| 00B0 | Initial signal not detected | NSF/DIS cannot be detected. Check the receiver and attempt the transmission again. |
| 00B1 | Terminal constants not compatible | DIS/NSF that cannot be handled by the sender was received. The receiver received NSS/DCS other than those declared by DIS/NSF. Check the transmission/reception functions, and attempt the communication again. |
| 00B2 | Reception of DCN (Phase B) | DCN was received in the phase B. |
| 00B3 | DCS/DTC not detected | DCS/DTC cannot be detected. |
| 00B4 | Training error | The sender performed fall-back but the transmission was not made. After the reception of FTT, the receiver received a time-out or DCN. Adjust the transmitter attenuator, link equalizer, etc. and retry the communication. |
| 00B5 | CFR not detected | A training signal was sent out but CFR cannot be detected. Adjust the transmitter attenuator, link equalizer, etc. and retry the transmission. |
| 00C0 | Image signal carrier not detected | A carrier was not detected on the receiving side. Adjust the transmitter attenuator, link equalizer, etc. and retry the transmission. |
| 00C1 | High speed signal not detected | A high-speed signal was not detected on the receiving side. Adjust the transmitter attenuator, link equalizer, etc. and retry the transmission. |
| 00C2 | Image signal carrier disconnected | Carrier disconnection was detected after the image signal was detected. |
| 00C3 | 1st EOL not detected | 1st EOL was not detected after the high-speed signal was detected. |
| 00C4 | EOL not detected | EOL cannot be detected on the receiving side. Or decoding is not possible with MMR. |

| Error code | Content | Situation and corrective action |
|------------|---------------------------|---|
| 00D0 | Post message not detected | A post message cannot be detected. Retry the communication. MCF, RTP, RTN, PIN and PIP cannot be detected on the sending side. MPS, EOM and EOP cannot be detected on the receiving side. |
| 00D1 | Reception of DCN | DCN was received. |
| 00D2 | Poor image quality | Quality of the received image is poor. Retry the transmission. |
| 00E8 | HDD error | Hardware is defective. |
| 00F0 | Software trouble | Software is defective. |
| 00F1 | Hardware noise | Hardware is defective. |

2) Status code list

| Mode | Transmission speed | Resolution | Encoding system |
|------|--------------------|------------|-----------------|
| 0 | 2400 | 8 x 3.85 | MH |
| 1 | 4800 | 8 x 7.7 | MR |
| 2 | 7200 | 8 x 15.4 | MMR |
| 3 | 9600 | | JBIG |
| 4 | 12000 | 16 x 15.4 | |
| 5 | 14400 | | |
| 6 | V.34 | | |
| 7 | | | |
| 8 | | 300 x 300 | |
| 9 | | | |
| A | | | |
| B | | | |
| C | | | |
| D | | | |
| E | | | |
| F | | | |

[Example of the indication of a status code]

522

 MMR (encoding system)
 8 x 15.4 (resolution)
 14400 (transmission speed)

For the combination of 14400 bps, 8x15.4 and MMR, as shown above, a status of "522" is indicate.

1.2 Error Messages

Error messages are not displayed for the background jobs (memory transmission and memory reception). See the reception/transmission report for the details of the errors.

If an original jam during the direct transmission or recording paper jam during printing occurred, error messages are displayed like when original jam occurred in the equipment.

Error messages and corrective actions

| Error | Symptom | Message | Remarks |
|-----------------------------------|--|---------------------|--|
| Memory full | Communication was interrupted because the memory became full. | Memory overflow | Message displayed only during the memory input. It is not displayed during the memory reception. |
| Line is busy | Redialing was attempted for the specified number of times but the line is still busy. | | Job information is stored in the memory when the final retry is finished. |
| Initial signal not detected | DIS is not detected. | Communication error | |
| Terminal constants not compatible | Received DIS unable to be handled. Received DCS which is beyond the capability of the receiver. | | |
| Training error | Fall-back is not made successfully. Became time-out after FTT was sent out. | Communication error | |
| CFR not detected | CFR (FTT) is not detected. | Communication error | |
| Image signal carrier not detected | Image signal carrier cannot be detected. | | |
| Image signal not detected | High-speed signal cannot be received by the receiver. | | |
| EOL time-out | EOL timer exceeded by 13 seconds | | |
| Post message not detected | Post message is not detected. | Communication error | |
| Poor image quality | TX: Received RTN/PIN/ERR RX: Transmitted RTN/PIN/ERR | Communication error | |
| Software overdrive | WDT communication terminated due to software overdrive | Communication error | |
| Hardware noise | Communication terminated due to software overdrive caused by hardware noise | Communication error | |

2. SELF-DIAGNOSIS MODE

There are two types of the self-diagnosis mode for the FAX operation.

- Test mode (03), adjustment mode (05) and setting mode (08): Some items are added to the test mode (03), adjustment mode (05) and setting mode (08) of the self-diagnosis function when the optional FAX unit is installed.
- FAX function mode (13) and FAX clearing mode (1*): These two modes are newly added to the machine when the FAX unit is installed. Started up by turning ON the power while pressing the specified keys are being pressed.

The followings are the modes which are added to (or extend) the PPC self-diagnosis function.

| Mode | For start | Function | Display |
|------------------------|--|--|-------------------|
| Test Mode | [0]+[3]+[POWER] | Output check (modem test, dialing test, CML test) | 100% C Test Mode |
| Adjustment Mode | [0]+[5]+[POWER] | Adjustment of the various items | 100% A Test Mode |
| Setting Mode | [0]+[8]+[POWER] | Setting the destination | 100% D Test Mode |
| FAX Function Mode | [1]+[3]+[POWER] | Setting functions of the various items | 100% F Test Mode |
| FAX Clearing Mode | [1]+[*]+[POWER] | Initialization of the various memory areas (user registration area, system setting area, image data area) | 100% CL Test Mode |
| Trace List Output Mode | Operating from the screen for Service UI (without entering the self-diagnostic mode) | Outputs the protocol trace list, dump list and function setting list | - |

To enter the desired mode, turn the power ON while pressing two digital keys designated to each mode (e.g. [0] and [5]) simultaneously.

Notes:

- **To finish the self-diagnosis mode, make sure to turn the power OFF and then back ON.**
When the equipment is started in one of the self-diagnosis modes, the equipment is occupied by the mode until the power is turned OFF. In this case, the recovery processing for the FAX operation is not performed.
- Faxes received automatically during the self-diagnosis mode may not be printed out. Be sure to disconnect the modular code from the line connector of the equipment before starting the self-diagnosis mode. Also, be sure to finish the self-diagnosis mode by turning the power OFF and back ON before connecting the modular code.
- The trace list output mode can be used by operating on the Service UI screen. For details of Service UI, refer to the Service Manual of the MFP.

2.1 Test Mode (03)

The modem test output, dialing test output and CML test output are performed in the Test Mode (03).

- 1) Modem test / CML test
[Operation procedure]

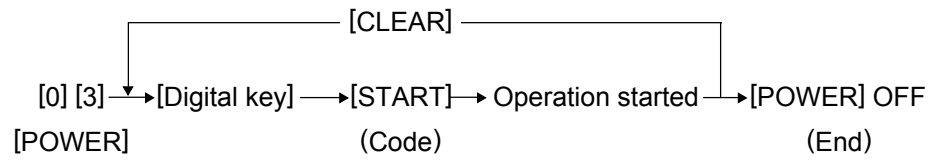


Fig. 2-1

- 2) Dialing test
[Operation procedure]

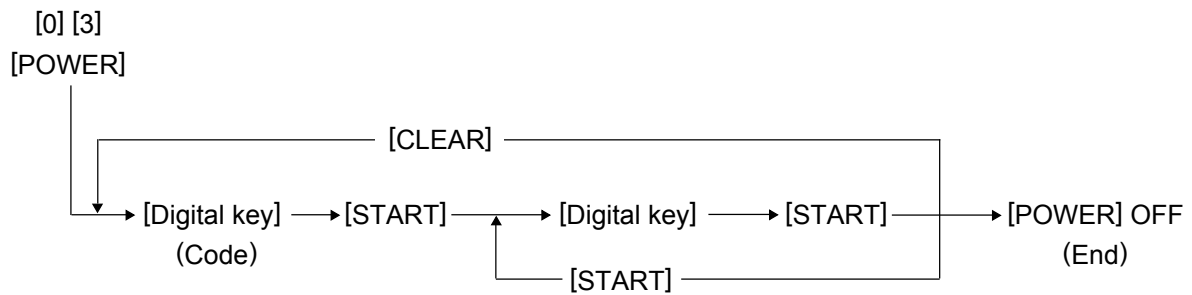


Fig. 2-2

Test code list

| Code | Element | Test |
|--------|---------|--|
| 03-301 | FAX | Modem test 2100 Hz |
| 03-302 | FAX | Modem test 14.4 kbps (V.17) |
| 03-303 | FAX | Modem test 9.6 kbps (V.29) |
| 03-304 | FAX | Modem test 4.8 kbps (V.27) |
| 03-305 | FAX | Modem test 300 BPS |
| 03-306 | FAX | Modem test 1850 Hz |
| 03-307 | FAX | Modem test 1650 Hz |
| 03-308 | FAX | Modem test 1100 Hz |
| 03-309 | FAX | Modem test 462 Hz |
| 03-310 | FAX | Modem test 1300 Hz |
| 03-311 | FAX | Modem test 33.6 kbps (V.34) |
| 03-312 | FAX | Modem test 28.8 kbps (V.34) |
| 03-313 | FAX | Modem test 24.0 kbps (V.34) |
| 03-314 | FAX | Modem test 16.8 kbps (V.34) |
| 03-315 | FAX | Dialing test 10 PPS (Tested with the digital keys) (The dial number corresponding to the key which was pressed is kept outputting on the circuit. The pressed key is displayed on the control panel.) |
| 03-317 | FAX | Dialing test PB (Tested with the digital keys) (The dial number corresponding to the key which was pressed is kept outputting on the circuit. The pressed key is displayed on the control panel.) |
| 03-318 | FAX | Modem test 12.0 kbps (V.17) |
| 03-319 | FAX | Modem test 7.2 kbps (V.29) |
| 03-320 | FAX | Modem test 2.4 kbps (V.27ter) |
| 03-321 | FAX | Performs Read/Write test to all the image memories mounted on the FAX board and displays the test result (status) on the control panel. Also, detects automatically whether the extended memory is mounted or not. |
| 03-322 | FAX | CML test: Turning ON the CML relay |

2.2 Adjustment Mode (05)

Parameter setting for the FAX image processing is performed in the Adjustment Mode (05).

- 1) Setting parameters for the FAX image processing
[Operation procedure]

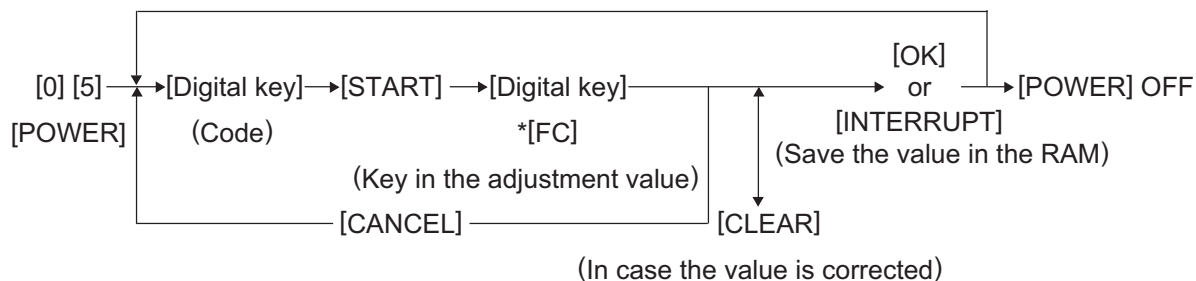


Fig. 2-3

*: "-" can be entered with the [FC] button.

Adjustment codes for the image processing parameters

| Code | Element | Adjustment item | Mode | Image quality mode | Default | Acceptable value |
|---------|---------|--|------|--------------------|---------|------------------|
| 05-7534 | Density | Adjustment of the threshold value for the binarization Center value | FAX | Text | 128 | 0 to 255 |
| 05-7535 | Density | Manual-density fine adjustment Error diffusion, Center value | FAX | Photo | 128 | 0 to 255 |
| 05-7533 | Density | Manual-density fine adjustment Error diffusion, Center value | FAX | Text/ Photo | 128 | 0 to 255 |
| 05-7543 | Density | Auto-density fine adjustment Error diffusion | FAX | Photo | 128 | 0 to 255 |
| 05-7542 | Density | Auto-density fine adjustment Error diffusion | FAX | Text/ Photo | 128 | 0 to 255 |

2) Volume adjustment of ring-back tone
[Operation procedure]

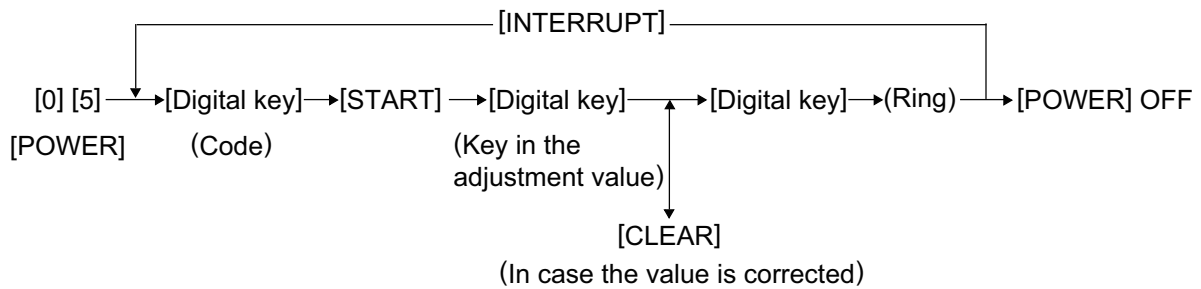


Fig. 2-4

| Code | Element | Adjustment item | Mode | Image quality mode | Default | Acceptable value |
|---------|---------|--|------|--------------------|---------|------------------|
| 05-9850 | FAX | Volume adjustment of pseudo ring for TEL/FAX Tone is output to speaker with set sound volume. 0 to 7 can be input. When the code is input, the speaker rings with set sound volume (setting value). The sound volume is set by pressing the INTERRUPT button. | FAX | - | 4 | 0 to 7 |

3) LED emission level adjustment
[Operation procedure]

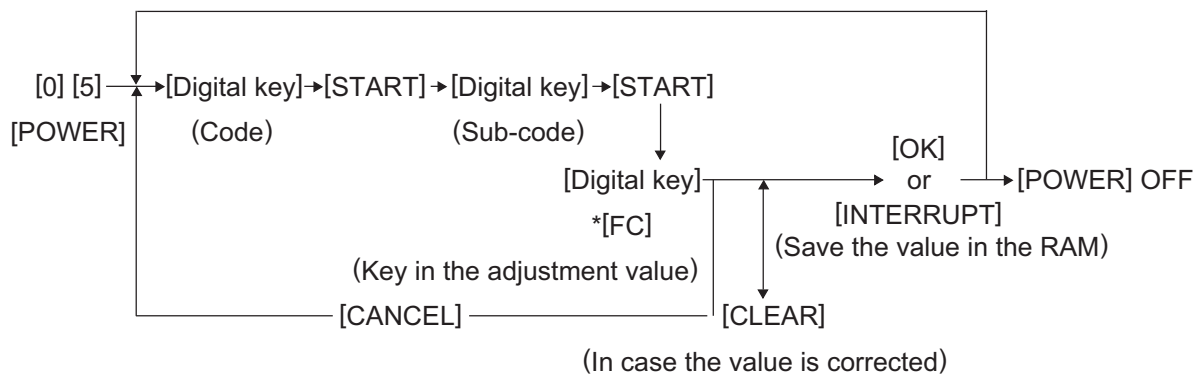


Fig. 2-5

*: "-" can be entered with the [FC] button.

| Code | Adjustment item | Remarks |
|-----------|------------------------|--|
| 05-7594-0 | LED emission level 0/4 | The smaller the value is, the smaller the LED emission level becomes. Therefore, the smaller dot is reproduced accordingly. Acceptable values: 0 to 255 (Default: Level 0/4: 0, Level 1/4: 63, Level 2/4: 127, Level 3/4: 191, Level 4/4: 255) |
| 05-7594-1 | LED emission level 1/4 | |
| 05-7594-2 | LED emission level 2/4 | |
| 05-7594-3 | LED emission level 3/4 | |
| 05-7594-4 | LED emission level 4/4 | |

2.3 Setting Mode (08)

The destination is set in the Setting Mode (08).

Note:

For the self-diagnosis code in the setting mode (08) not described in this manual, refer to "11. SELF-DIAGNOSIS CODE (03/04/05/08 CODE)" of the Service Manual Software Guide.

[Operation procedure]

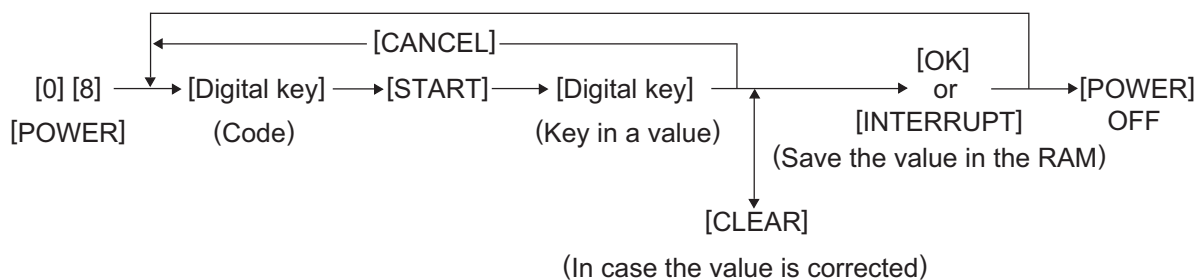


Fig. 2-6

| Code | Element | Adjustment item | Mode | Image mode | Default value at the product shipment |
|---------|---------|---|------|------------|---------------------------------------|
| 08-9001 | FAX | Destination 1: Asia (ASM) 2: Australia (AUS) 3: Hong Kong (HKG) 4: U.S.A/Canada (USA) 5: Germany (DEU) 6: Great Britain (GBR) 7: Italy (ITA) 8: Belgium (BEL) 9: Holland (NDL) 10: Finland (FIN) 11: Spain (ESP) 12: Austria (AUT) 13: Switzerland (CHE) 14: Sweden (SWE) 15: Denmark (DNK) 16: Norway (NOR) 17: Portugal (PRT) 18: France (FRA) 19: Greece (GRC) 20: Poland (POL) 21: Hungary (HUN) 22: Czech Rep. (CZE) 23: Turkey (TUR) 24: South Africa (ZAF) 25: Taiwan (TWN) 26: Russia (RUS) 27: Brazil (BRA) | FAX | - | NA: 4 EU: 5 AU: 2 |

<Screen example>

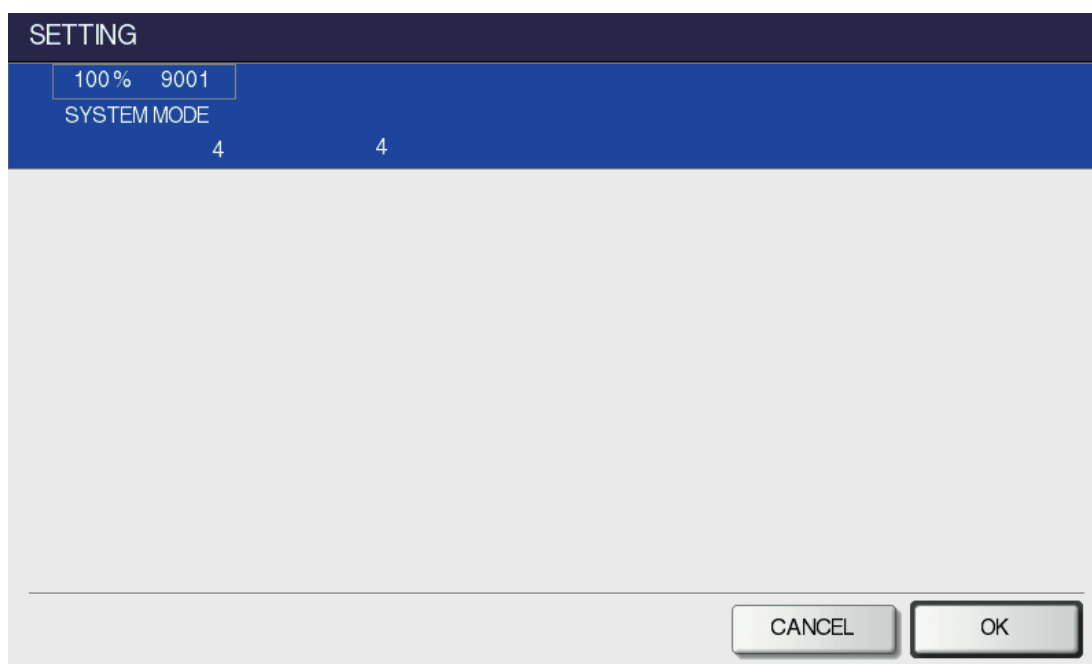


Fig. 2-7

2.4 Function Mode (13)

Various functions are set in the Function Mode (13).

- 1) Procedure to set the functions
Key in a code and change the set value.

[Operation procedure]

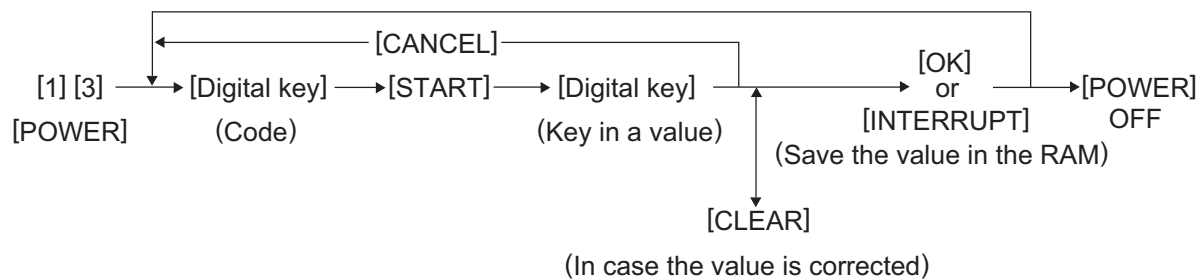


Fig. 2-8

- 2) Procedure to confirm the set value

[Operation procedure]

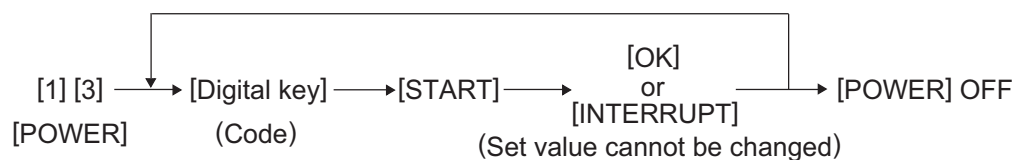


Fig. 2-9

Function code list (100-999)

100-299 Adjustment within the dialing standards

| Code | Adjustment | Function | Setting | Default | | | | | | | | |
|--------|-------------------------|---|---|---------|-----|-----|-----|-----|-----|-----|-----|-----|
| | | | | ASM | AUS | HKG | USA | DEU | GBR | ITA | BEL | NDL |
| 13-100 | DTC frequency (PSTN) | Sets the dial tone frequency to be detected for the PSTN. | 0: 300-600 Hz 1: 300-650 Hz 2: 390-550 Hz 3: 400-450 Hz 4: 350-480 Hz 5: 300-500 Hz | 0 | 0 | 0 | 0 | 1 | 1 | 1 | 1 | 1 |
| 13-101 | DTC time (PSTN) | Sets the time for a tone sounds to be determined as dial tone for the PSTN. | 0: 2 sec 1: 800 ms 2: 400 ms 3: 1 sec 4: 1.3 sec 5: 1.8 sec 6: 2.5 sec 7: 500 ms | 0 | 0 | 0 | 3 | 2 | 2 | 2 | 2 | 2 |
| 13-102 | LCC allowed gaps (PSTN) | Sets the interruption time for the PSTN to be ignored during LCC. | 0: OFF 1: 50 ms 2: 100 ms 3: 200 ms | 0 | 0 | 0 | 3 | 2 | 2 | 2 | 2 | 2 |
| 13-103 | DTC allowed gaps (PSTN) | Sets the interruption time for PSTN to be ignored during DTC. | 0: OFF 1: 320 ms 2: 160 ms 3: 240 ms | 1 | 1 | 1 | 1 | 1 | 1 | 1 | 1 | 1 |
| 13-104 | DTC/LCC for PSTN | Selects which is to be used for the PSTN, DTC or LCC. | 0: BZT (DTC/LCC) 1: LCC 5 sec 2: DTC only 3: FRN (DTC/LCC) 4: DTC (JPN) 5: NO DTC&LCC | 2 | 2 | 2 | 2 | 2 | 2 | 2 | 2 | 2 |
| 13-105 | DTC time out (PSTN) | Sets how long the dial tone detection is performed. | 0: 20 sec 1: 10 sec 2: 8 sec 3: 15 sec 4: 3.3 sec | 0 | 0 | 0 | 1 | 1 | 1 | 1 | 1 | 1 |
| 13-106 | DTC frequency (PABX) | Sets the dial tone frequency to be detected for PABX. | 0: 300-600 Hz 1: 300-650 Hz 2: 390-550 Hz 3: 400-450 Hz 4: 350-480 Hz 5: 300-500 Hz | 0 | 0 | 0 | 0 | 1 | 1 | 1 | 1 | 1 |
| 13-107 | DTC time (PABX) | Sets the time for a tone sounds to be determined as dial tone for the PABX. | 0: 2 sec 1: 800 ms 2: 400 ms 3: 1 sec 4: 1.3 sec 5: 1.8 sec 6: 2.5 sec 7: 150 ms | 0 | 0 | 0 | 6 | 2 | 2 | 2 | 2 | 2 |

| Default | | | | | | | | | | | | | | | | Code |
|---------|-----|-----|-----|-----|-----|-----|-----|-----|-----|-----|-----|-----|-----|-----|-----|--------|
| FIN | ESP | AUT | CHE | SWE | DNK | NOR | PRT | FRA | GRC | POL | HUN | CZE | TUR | ZAF | TWN | |
| 1 | 1 | 1 | 1 | 1 | 1 | 1 | 1 | 1 | 1 | 1 | 1 | 1 | 0 | 0 | 1 | 13-100 |
| 2 | 2 | 2 | 2 | 2 | 2 | 2 | 2 | 2 | 2 | 2 | 2 | 2 | 0 | 0 | 2 | 13-101 |
| 2 | 2 | 2 | 2 | 2 | 2 | 2 | 2 | 2 | 2 | 2 | 2 | 2 | 0 | 0 | 2 | 13-102 |
| 1 | 1 | 1 | 1 | 1 | 1 | 1 | 1 | 1 | 1 | 1 | 1 | 1 | 1 | 1 | 1 | 13-103 |
| 2 | 2 | 2 | 2 | 2 | 2 | 2 | 2 | 2 | 2 | 2 | 2 | 2 | 2 | 2 | 2 | 13-104 |
| 1 | 1 | 1 | 1 | 1 | 1 | 1 | 1 | 1 | 1 | 1 | 1 | 1 | 0 | 0 | 1 | 13-105 |
| 1 | 1 | 1 | 1 | 1 | 1 | 1 | 1 | 1 | 1 | 1 | 1 | 1 | 0 | 0 | 1 | 13-106 |
| 2 | 2 | 2 | 2 | 2 | 2 | 2 | 2 | 2 | 2 | 2 | 2 | 2 | 0 | 0 | 2 | 13-107 |

| Default | | Code |
|---------|-----|--------|
| RUS | BRA | |
| 1 | 0 | 13-100 |
| 2 | 3 | 13-101 |
| 2 | 3 | 13-102 |
| 1 | 1 | 13-103 |
| 2 | 2 | 13-104 |
| 1 | 1 | 13-105 |
| 1 | 0 | 13-106 |
| 2 | 6 | 13-107 |

| Code | Adjustment | Function | Setting | Default | | | | | | | | |
|--------|------------------------------|--|--|---------|-----|-----|-----|-----|-----|-----|-----|-----|
| | | | | ASM | AUS | HKG | USA | DEU | GBR | ITA | BEL | NDL |
| 13-108 | LCC allowed gaps (PABX) | Sets the interruption time for the PABX to be ignored during LCC. | 0: OFF 1: 50 ms 2: 100 ms 3: 200 ms | 0 | 0 | 0 | 0 | 3 | 3 | 3 | 3 | 3 |
| 13-109 | DTC allowed gaps (PABX) | Sets the interruption time for the PABX to be ignored during DTC. | 0: OFF 1: 320 ms 2: 160 ms 3: 240 ms | 1 | 1 | 1 | 1 | 1 | 1 | 1 | 1 | 1 |
| 13-110 | DTC/LCC for PABX | Selects which is to be used for the PABX, DTC or LCC. | 0: BZT (DTC/LCC) 1: LCC 5 sec 2: DTC only 3: FRN (DTC/LCC) 4: DTC (JPN) 5: NO DTC&LCC | 5 | 5 | 5 | 5 | 5 | 5 | 5 | 5 | 5 |
| 13-111 | DTC time out (PABX) | Sets how long the dial tone detection is performed. | 0: 20 sec 1: 10 sec 2: 8 sec 3: 15 sec 4: 3.3 sec | 0 | 0 | 0 | 1 | 1 | 1 | 1 | 1 | 1 |
| 13-112 | BTC frequency | Sets the busy tone frequency to be detected for the PSTN and PABX. | 0: Not detected 1: 300-600 Hz 2: 350-550 Hz 3: 300-500 Hz 4: 300-700 Hz | 0 | 0 | 0 | 1 | 1 | 1 | 1 | 1 | 1 |
| 13-116 | Dial T1 timer | Sets the time to wait for a response from the receiver after dialing is completed. | 0: 60 sec 1: 35 sec 2: 90 sec 3: 55 sec 4: 115 sec | 0 | 3 | 0 | 3 | 2 | 2 | 2 | 2 | 2 |
| 13-117 | Dial stop after T1 | In case of T1 time-out (no response from the receiver) during the automatic dialing, redialing is not performed and it is determined that the transmission is terminated due to error. | 0: OFF 1: ON | 0 | 0 | 0 | 1 | 0 | 0 | 0 | 0 | 0 |
| 13-122 | CML make time before dialing | Pause before dialing | 0: 0 ms 1: 10 ms 2: 255:2550 ms | 2 | 2 | 2 | 2 | 2 | 2 | 2 | 2 | 2 |

| Default | | | | | | | | | | | | | | | | Code |
|---------|-----|-----|-----|-----|-----|-----|-----|-----|-----|-----|-----|-----|-----|-----|-----|--------|
| FIN | ESP | AUT | CHE | SWE | DNK | NOR | PRT | FRA | GRC | POL | HUN | CZE | TUR | ZAF | TWN | |
| 3 | 3 | 3 | 3 | 3 | 3 | 3 | 3 | 3 | 3 | 3 | 3 | 3 | 0 | 0 | 2 | 13-108 |
| 1 | 1 | 1 | 1 | 1 | 1 | 1 | 1 | 1 | 1 | 1 | 1 | 1 | 1 | 1 | 1 | 13-109 |
| 5 | 5 | 5 | 5 | 5 | 5 | 5 | 5 | 5 | 5 | 5 | 5 | 5 | 5 | 5 | 5 | 13-110 |
| 1 | 1 | 1 | 1 | 1 | 1 | 1 | 1 | 1 | 1 | 1 | 1 | 1 | 0 | 0 | 1 | 13-111 |
| 1 | 1 | 1 | 1 | 1 | 1 | 1 | 1 | 1 | 1 | 1 | 1 | 1 | 0 | 0 | 1 | 13-112 |
| 2 | 2 | 2 | 2 | 2 | 2 | 2 | 2 | 2 | 2 | 2 | 2 | 2 | 0 | 0 | 3 | 13-116 |
| 0 | 0 | 0 | 0 | 0 | 0 | 0 | 0 | 0 | 0 | 0 | 0 | 0 | 0 | 0 | 0 | 13-117 |
| 2 | 2 | 2 | 2 | 2 | 2 | 2 | 2 | 2 | 2 | 2 | 2 | 2 | 2 | 2 | 2 | 13-122 |

| Default | | Code |
|---------|-----|--------|
| RUS | BRA | |
| 3 | 0 | 13-108 |
| 1 | 1 | 13-109 |
| 5 | 5 | 13-110 |
| 1 | 1 | 13-111 |
| 1 | 1 | 13-112 |
| 2 | 3 | 13-116 |
| 0 | 0 | 13-117 |
| 2 | 2 | 13-122 |

| Code | Adjustment | Function | Setting | Default | | | | | | | | |
|--------|-----------------------------|---|---|---------|-----|-----|-----|-----|-----|-----|-----|-----|
| | | | | ASM | AUS | HKG | USA | DEU | GBR | ITA | BEL | NDL |
| 13-123 | CML hold time after dialing | Pause after dialing | 0: 0 ms 1: 10 ms 255:2550 ms | 100 | 100 | 100 | 100 | 100 | 100 | 100 | 100 | 100 |
| 13-125 | Dial information | Sets the definition of the DP dial. Normal: n Shift: n+1 Reverse: 10-n n=Dial No. | 0: Normal 1: Shift 2: Reverse | 0 | 0 | 0 | 0 | 0 | 0 | 0 | 0 | 0 |
| 13-127 | Internal retry | When dialing is interrupted because any of the settings for DTC/LCC is not satisfied during redialing, that redialing is ignored since it is considered as an internal retry. | 0: OFF 1: ON | 0 | 0 | 0 | 0 | 1 | 1 | 0 | 0 | 0 |
| 13-128 | Redialing counter | Sets the number of redialings. | 0: No retry 1: 1 redialing 14: 14 redialings | 5 | 2 | 4 | 5 | 3 | 4 | 3 | 3 | 5 |
| 13-129 | Time for a pause | Sets the time for a pause when it is inserted between the dial numbers. | 0: 0 sec 1: 1 sec 2: 2 sec 3: 4 sec 4: 3.3 sec 5: 10 sec | 4 | 2 | 2 | 4 | 2 | 2 | 3 | 2 | 0 |
| 13-132 | Inter-digit pause | Sets the interval between digits for DP dialing. | 0: 900 ms 1: 550 ms 2: 700 ms 3: 800 ms | 0 | 0 | 2 | 3 | 0 | 3 | 3 | 2 | 2 |
| 13-135 | Redialing interval | Sets the interval between redialings. | 0: Default (3 min) 1: 1 min 15: 15 min | 3 | 1 | 3 | 1 | 0 | 0 | 3 | 2 | 2 |

| Default | | | | | | | | | | | | | | | | Code |
|---------|-----|-----|-----|-----|-----|-----|-----|-----|-----|-----|-----|-----|-----|-----|-----|--------|
| FIN | ESP | AUT | CHE | SWE | DNK | NOR | PRT | FRA | GRC | POL | HUN | CZE | TUR | ZAF | TWN | |
| 100 | 100 | 100 | 100 | 100 | 100 | 100 | 100 | 100 | 100 | 100 | 100 | 100 | 100 | 100 | 100 | 13-123 |
| 0 | 0 | 0 | 0 | 1 | 0 | 2 | 0 | 0 | 0 | 0 | 0 | 0 | 0 | 0 | 0 | 13-125 |
| 0 | 0 | 1 | 0 | 0 | 1 | 1 | 0 | 0 | 0 | 0 | 0 | 0 | 0 | 0 | 0 | 13-127 |
| 3 | 3 | 1 | 4 | 5 | 4 | 9 | 3 | 5 | 4 | 3 | 3 | 3 | 5 | 5 | 2 | 13-128 |
| 2 | 2 | 2 | 0 | 2 | 2 | 2 | 1 | 2 | 4 | 4 | 4 | 4 | 4 | 4 | 4 | 13-129 |
| 0 | 1 | 3 | 3 | 2 | 2 | 2 | 2 | 0 | 3 | 3 | 0 | 0 | 0 | 0 | 0 | 13-132 |
| 0 | 2 | 2 | 2 | 1 | 0 | 0 | 1 | 3 | 3 | 3 | 3 | 3 | 3 | 3 | 2 | 13-135 |

| Default | | Code |
|---------|-----|--------|
| RUS | BRA | |
| 100 | 100 | 13-123 |
| 0 | 0 | 13-125 |
| 1 | 0 | 13-127 |
| 3 | 5 | 13-128 |
| 2 | 4 | 13-129 |
| 0 | 3 | 13-132 |
| 0 | 1 | 13-135 |

| Code | Adjust- ment | Function | Setting | Default | | | | | | | | |
|--------|---------------------|---|--|---------|-----|-----|-----|-----|-----|-----|-----|-----|
| | | | | ASM | AUS | HKG | USA | DEU | GBR | ITA | BEL | NDL |
| 13-137 | DP make/break ratio | Sets the make/break ratio for DP dialing. | 0: 60/40 (10 PPS) 1: 67/33 (10 PPS) 2: 63/37 (10 PPS) 3: 50/50 (10 PPS) 4: 67/33 (20 PPS) 5: 70/30 (20 PPS, TWN only) | 1 | 1 | 1 | 0 | 0 | 1 | 0 | 1 | 0 |
| 13-138 | MF timing | Sets the ON/OFF timing of MF signals. Do not set the value "4" for the function code 138 and 268 to ensure minimum time of the MF signal duration ruled in TBR21 (Requirement 4.8.2.4, 4.8.2.5) | 0: 80/80 ms 1: 70/70 ms 2: 70/150 ms 3: 60/60 ms 4: 80/100 ms 5: 150/50 ms 6: 150/240 ms | 2 | 0 | 2 | 4 | 4 | 0 | 0 | 1 | 1 |
| 13-139 | DTC RX ATT (PSTN) | Sets the reception level when the dial tone is detected for the PSTN. | 0: -24 dBm 1: -27 dBm 2: -30 dBm 3: -33 dBm 4: -36 dBm 5: -39 dBm 6: -42 dBm 7: -45 dBm | 6 | 6 | 6 | 6 | 6 | 6 | 6 | 6 | 6 |
| 13-140 | DTC RX ATT (PABX) | Sets the reception level when the dial tone is detected for the PABX. | 0: -24 dBm 1: -27 dBm 2: -30 dBm 3: -33 dBm 4: -36 dBm 5: -39 dBm 6: -42 dBm 7: -45 dBm | 6 | 6 | 6 | 6 | 6 | 6 | 6 | 6 | 6 |
| 13-141 | MF TX-ATT | Sets the attenuator value for the MF signal. | 0: 0 dB 1: -1 dB ⋮ 15: -15 dB (Value decreased one by one) | 2 | 7 | 5 | 3 | 4 | 4 | 4 | 4 | 4 |

| Default | | | | | | | | | | | | | | | | Code |
|---------|-----|-----|-----|-----|-----|-----|-----|-----|-----|-----|-----|-----|-----|-----|-----|--------|
| FIN | ESP | AUT | CHE | SWE | DNK | NOR | PRT | FRA | GRC | POL | HUN | CZE | TUR | ZAF | TWN | |
| 0 | 1 | 0 | 0 | 0 | 1 | 0 | 1 | 1 | 0 | 1 | 0 | 0 | 1 | 1 | 5 | 13-137 |
| 0 | 2 | 0 | 0 | 1 | 2 | 0 | 0 | 0 | 4 | 0 | 3 | 1 | 2 | 2 | 4 | 13-138 |
| 6 | 6 | 6 | 6 | 6 | 6 | 6 | 6 | 6 | 6 | 6 | 6 | 6 | 6 | 6 | 6 | 13-139 |
| 6 | 6 | 6 | 6 | 6 | 6 | 6 | 6 | 6 | 6 | 6 | 6 | 6 | 6 | 6 | 6 | 13-140 |
| 4 | 4 | 4 | 4 | 4 | 4 | 4 | 4 | 4 | 4 | 4 | 4 | 4 | 3 | 3 | 3 | 13-141 |

| Default | | Code |
|---------|-----|--------|
| RUS | BRA | |
| 0 | 1 | 13-137 |
| 4 | 1 | 13-138 |
| 6 | 6 | 13-139 |
| 6 | 6 | 13-140 |
| 4 | 4 | 13-141 |

| Code | Adjust- ment | Function | Setting | Default | | | | | | | | |
|--------|--------------------------------|---|---|---------|------|------|------|------|------|------|------|------|
| | | | | ASM | AUS | HKG | USA | DEU | GBR | ITA | BEL | NDL |
| 13-142 | International DTC frequency | Selects the frequency range for the dial tone of the first pause to be detected. | 00: No detection 01: 300-600 Hz 02: 300-650 Hz 03: 390-550 Hz 04: 400-450 Hz 05: 350-480 Hz 06: 300-500 Hz 07: France Dual Tone (not used) | 0 | 0 | 0 | 0 | 0 | 0 | 0 | 0 | 0 |
| | | Selects the frequency range for the dial tone to be detected after dialing the second international dial access code. | 10: No detection 11: 300-600 Hz 12: 30-650 Hz 13: 390-550 Hz 14: 400-450 Hz 15: 350-480 Hz 16: 300-500 Hz 17: France Dual Tone (not used) | | | | | | | | | |
| 13-143 | International dial access code | Sets the international access code. | Numeric value of 3 digits (Default setting: 4 digits) | 1000 | 1000 | 1000 | 1000 | 1000 | 1000 | 1000 | 1000 | 1000 |
| 13-149 | ATT control | Sets the receiver attenuator. | 0: OFF 1: -3 dB | 0 | 0 | 0 | 0 | 0 | 0 | 0 | 0 | 0 |
| 13-150 | BTC ON time | Sets time that a busy-tone signal is output to be determined it is ON. | 0: 80-650 ms 1: 450-550 ms 2: 200-650 ms 3: 400-600 ms 4: 120-550 ms 5: 420-610 ms | 2 | 2 | 2 | 2 | 2 | 2 | 2 | 2 | 2 |
| 13-151 | BTC OFF time | Sets time that a busy-tone signal is not output to be determined it is OFF. | 0: 80-650 ms 1: 450-550 ms 2: 200-650 ms 3: 400-600 ms 4: 160-600 ms 5: 170-700 ms 6: 380-630 ms 7: 150-470 ms | 2 | 2 | 2 | 2 | 2 | 2 | 2 | 2 | 2 |

| Default | | | | | | | | | | | | | | | | Code |
|---------|------|------|------|------|------|------|------|------|------|------|------|------|------|------|------|--------|
| FIN | ESP | AUT | CHE | SWE | DNK | NOR | PRT | FRA | GRC | POL | HUN | CZE | TUR | ZAF | TWN | |
| 0 | 0 | 0 | 0 | 0 | 0 | 0 | 0 | 0 | 0 | 0 | 0 | 0 | 0 | 0 | 2 | 13-142 |
| 1000 | 1000 | 1000 | 1000 | 1000 | 1000 | 1000 | 1000 | 1000 | 1000 | 1000 | 1000 | 1000 | 1000 | 1000 | 1000 | 13-143 |
| 0 | 0 | 0 | 0 | 0 | 0 | 0 | 0 | 0 | 0 | 0 | 0 | 0 | 0 | 0 | 0 | 13-149 |
| 2 | 2 | 2 | 2 | 2 | 2 | 2 | 2 | 2 | 2 | 2 | 2 | 2 | 2 | 2 | 2 | 13-150 |
| 2 | 2 | 2 | 2 | 2 | 2 | 2 | 2 | 2 | 2 | 2 | 2 | 2 | 2 | 2 | 2 | 13-151 |

| Default | | Code |
|---------|------|--------|
| RUS | BRA | |
| 0 | 0 | 13-142 |
| 1000 | 1000 | 13-143 |
| 0 | 0 | 13-149 |
| 2 | 2 | 13-150 |
| 2 | 2 | 13-151 |

| Code | Adjustment | Function | Setting | Default | | | | | | | | |
|--------|-----------------------------------|--|---|---------|------|------|------|------|------|------|-----|------|
| | | | | ASM | AUS | HKG | USA | DEU | GBR | ITA | BEL | NDL |
| 13-152 | MF dial level balance | Sets the difference between the high output and low output of the MF signal. | 0: 0 dB 1: -1 dB 2: -2 dB 3: -3 dB 4: -4 dB (Value decreased one by one) | 2 | 2 | 2 | 2 | 2 | 2 | 2 | 2 | 2 |
| 13-153 | Italian Intermittent DTC function | Sets Italian intermittent DTC function. | 0: OFF 1: ON | 0 | 0 | 0 | 0 | 0 | 0 | 1 | 0 | 0 |
| 13-200 | Exchange type | Selects the exchange type. | 0: PSTN 1: PABX | 0 | 0 | 0 | 0 | 0 | 0 | 0 | 0 | 0 |
| 13-201 | Dial selection | Selects the access type for the PABX. | 0: Not defined 1: Local/Distant 2: Access Digit | 1 | 1 | 1 | 1 | 1 | 1 | 1 | 1 | 1 |
| 13-203 | Dialer type | Selects the dial type. | 0: DP 1: MF | 1 | 1 | 1 | 1 | 1 | 1 | 1 | 1 | 1 |
| 13-206 | Local/distant dial | Key in an access code designated for the access type selected for the function code 201. Local: 2 digits Distant: 2 digits Access Digit: 3 digits | Numeric value of 3 digits (4 digits for the default setting) | 1000 | 1000 | 1000 | 1000 | 1000 | 1000 | 1000 | 100 | 1000 |

| Default | | | | | | | | | | | | | | | | Code |
|---------|------|------|------|------|------|------|------|------|------|------|------|------|------|------|------|--------|
| FIN | ESP | AUT | CHE | SWE | DNK | NOR | PRT | FRA | GRC | POL | HUN | CZE | TUR | ZAF | TWN | |
| 2 | 2 | 2 | 2 | 2 | 2 | 2 | 2 | 2 | 2 | 2 | 2 | 2 | 2 | 2 | 2 | 13-152 |
| 0 | 0 | 0 | 0 | 0 | 0 | 0 | 0 | 0 | 0 | 0 | 0 | 0 | 0 | 0 | 0 | 13-153 |
| 0 | 0 | 0 | 0 | 0 | 0 | 0 | 0 | 0 | 0 | 0 | 0 | 0 | 0 | 0 | 0 | 13-200 |
| 1 | 1 | 1 | 1 | 1 | 1 | 1 | 1 | 1 | 1 | 1 | 1 | 1 | 1 | 1 | 1 | 13-201 |
| 1 | 1 | 1 | 1 | 1 | 1 | 1 | 1 | 1 | 1 | 1 | 1 | 1 | 1 | 1 | 1 | 13-203 |
| 1000 | 1000 | 1000 | 1000 | 1000 | 1000 | 1000 | 1000 | 1000 | 1000 | 1000 | 1000 | 1000 | 1000 | 1000 | 1000 | 13-206 |

| Default | | Code |
|---------|------|--------|
| RUS | BRA | |
| 2 | 2 | 13-152 |
| 0 | 0 | 13-153 |
| 0 | 0 | 13-200 |
| 1 | 1 | 13-201 |
| 1 | 1 | 13-203 |
| 1000 | 1000 | 13-206 |

300-699 Adjustments for switching function specifications

| Code | Adjustment | Function | Setting | Default | | | | | | | | |
|--------|------------------------------|---|---|---------|-----|-----|-----|-----|-----|-----|-----|-----|
| | | | | ASM | AUS | HKG | USA | DEU | GBR | ITA | BEL | NDL |
| 13-312 | CI history hold time | Sets the time for the CI history to remain. | 0: 5 sec 1: 8 sec 2: 14 sec | 1 | 1 | 1 | 2 | 2 | 2 | 2 | 2 | 2 |
| 13-313 | CI detection frequency range | Sets the frequency range for CI detection. | 0: 12-80 Hz 1: 16-55 Hz 2: 20-55 Hz 3: 22-55 Hz 4: 5-200 Hz | 0 | 0 | 0 | 0 | 1 | 1 | 1 | 1 | 1 |
| 13-317 | Handling of negative answer | Sets whether the RTN received is handled as abnormal (NG) or normal when the data are slightly abnormal. Abnormal: DCN is transmitted to stop the communication. Normal: Next page is transmitted normally. | 0: Abnormal 1: Normal | 1 | 1 | 1 | 0 | 0 | 0 | 0 | 0 | 0 |
| 13-325 | TX attenuation value (V.17) | Sets the modem transmission level for communication other than V.34. The smaller the value is, the higher the transmission level becomes. If errors occur frequently or training is not sent, the transmission level should be changed. | 0: 0 dB 1: -1 dB 15: -15 dB (Value decreased one by one) | 10 | 10 | 10 | 10 | 12 | 12 | 12 | 12 | 12 |
| 13-328 | Cable equalizer (V.17) | Sets the equalizer value which has frequency characteristics. For the long-distance communication, it is recommended to set a large value. | 0: 0 dB 1: -4 dB 2: -8 dB 3: -12 dB | 0 | 0 | 0 | 0 | 0 | 0 | 0 | 0 | 0 |

| Default | | | | | | | | | | | | | | | | Code |
|---------|-----|-----|-----|-----|-----|-----|-----|-----|-----|-----|-----|-----|-----|-----|-----|--------|
| FIN | ESP | AUT | CHE | SWE | DNK | NOR | PRT | FRA | GRC | POL | HUN | CZE | TUR | ZAF | TWN | |
| 2 | 2 | 2 | 2 | 2 | 2 | 2 | 2 | 2 | 2 | 2 | 2 | 2 | 1 | 1 | 2 | 13-312 |
| 1 | 1 | 1 | 1 | 1 | 1 | 1 | 1 | 1 | 1 | 1 | 1 | 1 | 0 | 0 | 0 | 13-313 |
| 0 | 0 | 0 | 0 | 0 | 0 | 0 | 0 | 0 | 0 | 0 | 0 | 0 | 1 | 1 | 0 | 13-317 |
| 12 | 12 | 12 | 12 | 12 | 12 | 12 | 12 | 12 | 12 | 12 | 12 | 12 | 10 | 10 | 13 | 13-325 |
| 0 | 0 | 0 | 0 | 0 | 0 | 0 | 0 | 0 | 0 | 0 | 0 | 0 | 0 | 0 | 0 | 13-328 |

| Default | | Code |
|---------|-----|--------|
| RUS | BRA | |
| 2 | 2 | 13-312 |
| 1 | 0 | 13-313 |
| 0 | 0 | 13-317 |
| 12 | 10 | 13-325 |
| 0 | 0 | 13-328 |

| Code | Adjustment | Function | Setting | Default | | | | | | | | |
|--------|---|---|--|---------|-----|-----|-----|-----|-----|-----|-----|-----|
| | | | | ASM | AUS | HKG | USA | DEU | GBR | ITA | BEL | NDL |
| 13-331 | Echo protection delay (high speed) (V.21) | Sets if a delay (500 ms) is inserted before sending the V.21 signal and timing is shifted to avoid the line echo. | 0: OFF 1: ON (500 ms) | 1 | 0 | 1 | 1 | 1 | 1 | 1 | 1 | 1 |
| 13-335 | Modem speed initial value | Sets the initial modem speed to be declared by DIS/DCS. | 0: 2,400 bps 1: 14.4 kbps (V.17) 4: 4,800 bps 5: 12 kbps (V.17) 8: 9,600 bps 9: 9,600 bps (V.17) 12: 7,200 bps 13: 7,200 bps (V.17) | 1 | 1 | 1 | 1 | 1 | 1 | 1 | 1 | 1 |
| 13-338 | Forcible line monitoring | Selects the line to monitor. | 0: OFF 1: Line 1 2: Line 2 | 0 | 0 | 0 | 0 | 0 | 0 | 0 | 0 | 0 |
| 13-339 | CI-ON determine time | CI ON-satiable time. | 0: 175 ms 1: 125 ms 2: 800 ms 3: 145 ms | 0 | 0 | 0 | 0 | 0 | 0 | 0 | 0 | 0 |
| 13-340 | CI-OFF determine time | CI OFF-satiable time. | 0: 650 ms 1: 350 ms 2: 175 ms 3: 90 ms | 2 | 2 | 2 | 2 | 2 | 2 | 2 | 2 | 2 |
| 13-346 | Recording width capacity declaration | Selects either one of the followings to declare the maximum recording width to the other party when the specified paper size is not available; the largest paper in the other drawer or the drawer for the largest paper. | 0: Paper 1: Drawer | 0 | 0 | 0 | 0 | 0 | 0 | 0 | 0 | 0 |
| 13-350 | High speed carrier-OFF detection timer | Sets the time to determine the carrier signal is stopped completely. | 0: 1.5 sec 1: 6 sec (FTZ) | 1 | 1 | 1 | 1 | 1 | 1 | 1 | 1 | 1 |

| Default | | | | | | | | | | | | | | | | Code |
|---------|-----|-----|-----|-----|-----|-----|-----|-----|-----|-----|-----|-----|-----|-----|-----|--------|
| FIN | ESP | AUT | CHE | SWE | DNK | NOR | PRT | FRA | GRC | POL | HUN | CZE | TUR | ZAF | TWN | |
| 1 | 1 | 1 | 1 | 1 | 1 | 1 | 1 | 1 | 1 | 1 | 1 | 1 | 1 | 1 | 1 | 13-331 |
| 1 | 1 | 1 | 1 | 1 | 1 | 1 | 1 | 1 | 1 | 1 | 1 | 1 | 1 | 1 | 1 | 13-335 |
| 0 | 0 | 0 | 0 | 0 | 0 | 0 | 0 | 0 | 0 | 0 | 0 | 0 | 0 | 0 | 0 | 13-338 |
| 0 | 0 | 0 | 0 | 0 | 0 | 0 | 0 | 0 | 0 | 0 | 0 | 0 | 0 | 0 | 0 | 13-339 |
| 2 | 2 | 2 | 2 | 2 | 2 | 2 | 2 | 2 | 2 | 2 | 2 | 2 | 2 | 2 | 2 | 13-340 |
| 0 | 0 | 0 | 0 | 0 | 0 | 0 | 0 | 0 | 0 | 0 | 0 | 0 | 0 | 0 | 0 | 13-346 |
| 1 | 1 | 1 | 1 | 1 | 1 | 1 | 1 | 1 | 1 | 1 | 1 | 1 | 1 | 1 | 1 | 13-350 |

| Default | | Code |
|---------|-----|--------|
| RUS | BRA | |
| 1 | 1 | 13-331 |
| 1 | 1 | 13-335 |
| 0 | 0 | 13-338 |
| 0 | 0 | 13-339 |
| 2 | 2 | 13-340 |
| 0 | 0 | 13-346 |
| 1 | 1 | 13-350 |

| Code | Adjust- ment | Function | Setting | Default | | | | | | | | |
|--------|--|---|--|---------|-----|-----|-----|-----|-----|-----|-----|-----|
| | | | | ASM | AUS | HKG | USA | DEU | GBR | ITA | BEL | NDL |
| 13-351 | Off-hook alarm | Sets the volume of the alarm sounded when the handset has been left off the cradle even though the communication is finished. | 0: No alarm 1: Level 1 (Min.) 7: Level 7 (Max.) | 0 | 0 | 0 | 0 | 3 | 3 | 3 | 3 | 3 |
| 13-355 | Memory transmission report | Sets whether the memory transmission report is output or not. Also, selects the output conditions. | 0: OFF 1: On Error (BZT) 2: ALWAYS 3: On Error 5: On Error (BZT/W) 6: Always (W) 7: On Error (W) | 7 | 7 | 7 | 7 | 6 | 6 | 6 | 6 | 6 |
| 13-356 | Multi address transmission report | Sets whether the multi-address transmission report is printed or not. Also, selects the output condition. | 0: OFF 1: Always 2: On error 3: Always (W) 4: On error (W) | 4 | 4 | 4 | 4 | 3 | 3 | 3 | 3 | 3 |
| 13-357 | Direct document transmission report | Sets whether the direct transmission report is printed or not. Also, selects the output condition. | 0: OFF 1: Always 2: On error | 1 | 1 | 1 | 1 | 1 | 1 | 1 | 1 | 1 |
| 13-359 | Multi polling report | Sets whether the multi-polling transmission report is printed or not. Also, selects the output condition. | 0: OFF 1: Always 2: On error | 2 | 2 | 2 | 2 | 1 | 1 | 1 | 1 | 1 |
| 13-361 | ITU-T Relay transmission (originator) report | Sets whether the report is printed or not. Also, selects the output condition. | 0: OFF 1: Always 2: On error 3: Always (W) 4: On error (W) | 3 | 3 | 3 | 3 | 3 | 3 | 3 | 3 | 3 |

| Default | | | | | | | | | | | | | | | | Code |
|---------|-----|-----|-----|-----|-----|-----|-----|-----|-----|-----|-----|-----|-----|-----|-----|--------|
| FIN | ESP | AUT | CHE | SWE | DNK | NOR | PRT | FRA | GRC | POL | HUN | CZE | TUR | ZAF | TWN | |
| 3 | 3 | 3 | 3 | 3 | 3 | 3 | 3 | 3 | 3 | 3 | 3 | 3 | 0 | 0 | 0 | 13-351 |
| 6 | 6 | 6 | 6 | 6 | 6 | 6 | 6 | 6 | 6 | 6 | 6 | 6 | 7 | 7 | 7 | 13-355 |
| 3 | 3 | 3 | 3 | 3 | 3 | 3 | 3 | 3 | 3 | 3 | 3 | 3 | 4 | 4 | 4 | 13-356 |
| 1 | 1 | 1 | 1 | 1 | 1 | 1 | 1 | 1 | 1 | 1 | 1 | 1 | 1 | 1 | 1 | 13-357 |
| 1 | 1 | 1 | 1 | 1 | 1 | 1 | 1 | 1 | 1 | 1 | 1 | 1 | 2 | 2 | 2 | 13-359 |
| 3 | 3 | 3 | 3 | 3 | 3 | 3 | 3 | 3 | 3 | 3 | 3 | 3 | 3 | 3 | 3 | 13-361 |

| Default | | Code |
|---------|-----|--------|
| RUS | BRA | |
| 3 | 0 | 13-351 |
| 6 | 7 | 13-355 |
| 3 | 4 | 13-356 |
| 1 | 1 | 13-357 |
| 1 | 2 | 13-359 |
| 3 | 3 | 13-361 |

| Code | Adjustment | Function | Setting | Default | | | | | | | | |
|--------|--|--|--|---------|-----|-----|-----|-----|-----|-----|-----|-----|
| | | | | ASM | AUS | HKG | USA | DEU | GBR | ITA | BEL | NDL |
| 13-362 | Result report printout for relay hub station | Sets whether the relay multi-address transmission report is printed or not. Also, selects the output condition. | 0: OFF 1: Always 2: On error 3: Always (W) 4: On error (W) | 4 | 4 | 4 | 4 | 3 | 3 | 3 | 3 | 3 |
| 13-363 | ITU-T Relay transmission (end station) report | Sets whether the report is transported or not. Also, selects the transport condition. | 0: OFF 1: Always 2: On error 3: Always (W) 4: On error (W) | 2 | 2 | 2 | 2 | 2 | 2 | 2 | 2 | 2 |
| 13-365 | Printing function for relay station (reception report) | Sets whether the relay multi-address reception report is printed or not. | 0: OFF 1: ON | 0 | 0 | 0 | 0 | 1 | 1 | 1 | 1 | 1 |
| 13-367 | F-code acceptance list | Sets whether the acceptance list is printed when the data are sent into the confidential box or bulletin board or not. Also, selects the output condition. | 0: OFF 1: Remote ON, local OFF 2: Remote OFF, local ON 3: ON | 0 | 0 | 0 | 0 | 1 | 1 | 1 | 1 | 1 |
| 13-368 | Journal auto-output | Sets whether the journal is output automatically or not. | 0: OFF 1: ON | 1 | 1 | 1 | 1 | 1 | 1 | 1 | 1 | 1 |
| 13-370 | Communication result on journal (OK/NG) | Selects whether the communication result (OK/NG) is reported on the journal or not. | 0: Not reported 1: Reported | 1 | 1 | 1 | 1 | 1 | 1 | 1 | 1 | 1 |
| 13-371 | Communication result on journal (error code) | Selects whether the communication error code is reported on the journal or not. | 0: Not reported 1: Reported | 1 | 1 | 1 | 1 | 1 | 1 | 1 | 1 | 1 |
| 13-372 | CI detection counter setting for auto-RX | Sets the CI counter value for the machine to enter the automatic reception mode. | 0: Once 1: Once 15: 15 times (Value increased one by one) | 1 | 4 | 1 | 2 | 2 | 2 | 2 | 2 | 2 |

| Default | | | | | | | | | | | | | | | | Code |
|---------|-----|-----|-----|-----|-----|-----|-----|-----|-----|-----|-----|-----|-----|-----|-----|--------|
| FIN | ESP | AUT | CHE | SWE | DNK | NOR | PRT | FRA | GRC | POL | HUN | CZE | TUR | ZAF | TWN | |
| 3 | 3 | 3 | 3 | 3 | 3 | 3 | 3 | 3 | 3 | 3 | 3 | 3 | 4 | 4 | 4 | 13-362 |
| 2 | 2 | 2 | 2 | 2 | 2 | 2 | 2 | 2 | 2 | 2 | 2 | 2 | 2 | 2 | 2 | 13-363 |
| 1 | 1 | 1 | 1 | 1 | 1 | 1 | 1 | 1 | 1 | 1 | 1 | 1 | 0 | 0 | 0 | 13-365 |
| 1 | 1 | 1 | 1 | 1 | 1 | 1 | 1 | 1 | 1 | 1 | 1 | 1 | 0 | 0 | 0 | 13-367 |
| 1 | 1 | 1 | 1 | 1 | 1 | 1 | 1 | 1 | 1 | 1 | 1 | 1 | 1 | 1 | 1 | 13-368 |
| 1 | 1 | 1 | 1 | 1 | 1 | 1 | 1 | 1 | 1 | 1 | 1 | 1 | 1 | 1 | 1 | 13-370 |
| 1 | 1 | 1 | 1 | 1 | 1 | 1 | 1 | 1 | 1 | 1 | 1 | 1 | 1 | 1 | 1 | 13-371 |
| 2 | 2 | 2 | 2 | 2 | 2 | 2 | 2 | 2 | 2 | 2 | 2 | 2 | 1 | 1 | 2 | 13-372 |

| Default | | Code |
|---------|-----|--------|
| RUS | BRA | |
| 3 | 4 | 13-362 |
| 2 | 2 | 13-363 |
| 1 | 0 | 13-365 |
| 1 | 0 | 13-367 |
| 1 | 1 | 13-368 |
| 1 | 1 | 13-370 |
| 1 | 1 | 13-371 |
| 2 | 2 | 13-372 |

| Code | Adjustment | Function | Setting | Default | | | | | | | | |
|--------|---|---|--|---------|-----|-----|-----|-----|-----|-----|-----|-----|
| | | | | ASM | AUS | HKG | USA | DEU | GBR | ITA | BEL | NDL |
| 13-373 | Speaker volume (monitor tone) | Sets the speaker volume for on-hook status or protocol monitor. | 0: Level 0 (Min.) 7: Level 7 (Max.) | 6 | 6 | 6 | 6 | 6 | 6 | 6 | 6 | 6 |
| 13-375 | Discard parameter on printing | Sets the data length to be discarded when the received data exceed the effective recording length. | 0: 0 mm (No elimination) 1: 10 mm 2: 18 mm 3: 22 mm 4: 34 mm | 1 | 1 | 1 | 1 | 1 | 1 | 1 | 1 | 1 |
| 13-377 | Printing mode (Reduction in vertical direction) | Sets if the received document is reduced automatically in the vertical direction to appropriate recording size. | 0: Auto-reduction 1: No reduction | 0 | 0 | 0 | 0 | 0 | 0 | 0 | 0 | 0 |
| 13-378 | Discard printing | Selects if the discard printing is performed. | 0: OFF 1: ON | 1 | 1 | 1 | 1 | 1 | 1 | 1 | 1 | 1 |
| 13-379 | Maximum reduction rate in vertical direction | Sets the maximum reduction rate in the vertical direction. | 0: 90% 1: 75% | 0 | 1 | 0 | 1 | 1 | 1 | 1 | 1 | 1 |
| 13-382 | Reception information on received document | Sets if the receiver information is printed on received document. | 0: OFF 1: ON | 0 | 0 | 0 | 0 | 0 | 0 | 0 | 0 | 0 |
| 13-389 | RX mode (PSTN) | Selects the receiving mode. | 0: TEL 1: FAX 2: TEL/FAX | 1 | 1 | 1 | 1 | 1 | 1 | 1 | 1 | 1 |
| 13-391 | ECM function | Sets if the ECM communication is performed. | 0: OFF 1: ON | 1 | 1 | 1 | 1 | 1 | 1 | 1 | 1 | 1 |
| 13-394 | Recovery transmission retaining time | Sets the time for the HDD to retain data when the transmission was terminated due to an error. | 1: 1 hour 24: 24 hours | 6 | 6 | 6 | 6 | 6 | 6 | 6 | 6 | 6 |

| Default | | | | | | | | | | | | | | | | Code |
|---------|-----|-----|-----|-----|-----|-----|-----|-----|-----|-----|-----|-----|-----|-----|-----|--------|
| FIN | ESP | AUT | CHE | SWE | DNK | NOR | PRT | FRA | GRC | POL | HUN | CZE | TUR | ZAF | TWN | |
| 6 | 6 | 6 | 6 | 6 | 6 | 6 | 6 | 6 | 6 | 6 | 6 | 6 | 6 | 6 | 6 | 13-373 |
| 1 | 1 | 1 | 1 | 1 | 1 | 1 | 1 | 1 | 1 | 1 | 1 | 1 | 1 | 1 | 1 | 13-375 |
| 0 | 0 | 0 | 0 | 0 | 0 | 0 | 0 | 0 | 0 | 0 | 0 | 0 | 0 | 0 | 0 | 13-377 |
| 1 | 1 | 1 | 1 | 1 | 1 | 1 | 1 | 1 | 1 | 1 | 1 | 1 | 1 | 1 | 1 | 13-378 |
| 1 | 1 | 1 | 1 | 1 | 1 | 1 | 1 | 1 | 1 | 1 | 1 | 1 | 0 | 0 | 1 | 13-379 |
| 0 | 0 | 0 | 0 | 0 | 0 | 0 | 0 | 0 | 0 | 0 | 0 | 0 | 0 | 0 | 0 | 13-382 |
| 1 | 1 | 1 | 1 | 1 | 1 | 1 | 1 | 1 | 1 | 1 | 1 | 1 | 1 | 1 | 1 | 13-389 |
| 1 | 1 | 1 | 1 | 1 | 1 | 1 | 1 | 1 | 1 | 1 | 1 | 1 | 1 | 1 | 1 | 13-391 |
| 6 | 6 | 6 | 6 | 6 | 6 | 6 | 6 | 6 | 6 | 6 | 6 | 6 | 6 | 6 | 6 | 13-394 |

| Default | | Code |
|---------|-----|--------|
| RUS | BRA | |
| 6 | 6 | 13-373 |
| 1 | 1 | 13-375 |
| 0 | 0 | 13-377 |
| 1 | 1 | 13-378 |
| 1 | 1 | 13-379 |
| 0 | 0 | 13-382 |
| 1 | 1 | 13-389 |
| 1 | 1 | 13-391 |
| 6 | 6 | 13-394 |

| Code | Adjustment | Function | Setting | Default | | | | | | | | |
|--------|--|--|---|---------|-----|-----|-----|-----|-----|-----|-----|-----|
| | | | | ASM | AUS | HKG | USA | DEU | GBR | ITA | BEL | NDL |
| 13-501 | Communication control in case PPR is received four times | Sets how the communication is controlled when the 4th PPR is received during the ECM transmission. | 0: EOR transmitted 1: CTC (communication terminated after the 4th 2400 bps PPR) 2: CTC (EOR transmitted after the reception of the 4th 2,400 bps PPR) | 2 | 2 | 2 | 2 | 2 | 2 | 2 | 2 | 2 |
| 13-509 | Modem speed for overseas communication (except V.34) | Sets the initial modem speed for overseas communication. | 0: 9,600 bps 1: 7,200 bps 2: 4,800 bps | 0 | 0 | 0 | 0 | 0 | 0 | 0 | 0 | 0 |
| 13-510 | Position of header for transmission information | Selects the position where the header is inserted. | 2: Inside 3: Outside | 2 | 2 | 2 | 2 | 2 | 2 | 2 | 2 | 2 |

| Default | | | | | | | | | | | | | | | | Code |
|---------|-----|-----|-----|-----|-----|-----|-----|-----|-----|-----|-----|-----|-----|-----|-----|--------|
| FIN | ESP | AUT | CHE | SWE | DNK | NOR | PRT | FRA | GRC | POL | HUN | CZE | TUR | ZAF | TWN | |
| 2 | 2 | 2 | 2 | 2 | 2 | 2 | 2 | 2 | 2 | 2 | 2 | 2 | 2 | 2 | 2 | 13-501 |
| 0 | 0 | 0 | 0 | 0 | 0 | 0 | 0 | 0 | 0 | 0 | 0 | 0 | 0 | 0 | 0 | 13-509 |
| 2 | 2 | 2 | 2 | 2 | 2 | 2 | 2 | 2 | 2 | 2 | 2 | 2 | 2 | 2 | 2 | 13-510 |

| Default | | Code |
|---------|-----|--------|
| RUS | BRA | |
| 2 | 2 | 13-501 |
| 0 | 0 | 13-509 |
| 2 | 2 | 13-510 |

| Code | Adjustment | Function | Setting | Default | | | | | | | | |
|--------|---|--|-------------------------------------|---------|-----|-----|-----|-----|-----|-----|-----|-----|
| | | | | ASM | AUS | HKG | USA | DEU | GBR | ITA | BEL | NDL |
| 13-511 | Transmission information at header | Sets the header insertion. | 0: Not inserted 1: Inserted | 1 | 1 | 1 | 1 | 1 | 1 | 1 | 1 | 1 |
| 13-512 | Threshold for error image (G3 mode only) | After receiving a document with more error lines than this threshold level, the machine transmits the RTN signal to the sender. | 0: 5% 1: 10% 2: 15% 3: 25% | 1 | 1 | 1 | 1 | 1 | 1 | 1 | 1 | 1 |
| 13-517 | Regular reduction | Sets if the regular reduction printing (A3→B4 or A4, B4→A4 or B5) is performed. | 0: OFF 1: ON | 0 | 0 | 0 | 0 | 0 | 0 | 0 | 0 | 0 |
| 13-518 | Duplex printing | Sets if duplex printing for received documents is performed. | 0: OFF 1: ON | 0 | 0 | 0 | 0 | 0 | 0 | 0 | 0 | 0 |
| 13-519 | Paper selection for received FAX document | Selects which one has priority over the other, A4 series or LT series, to print the received document when these two series are mixed in a drawer. | 0: A4 series 1: LT series | 0 | 0 | 0 | 1 | 0 | 0 | 0 | 0 | 0 |
| 13-564 | Control channel speed | Selects the control channel speed for the V.34 communication. | 0: 1,200 bps 1: 2,400 bps | 0 | 0 | 0 | 0 | 0 | 0 | 0 | 0 | 0 |
| 13-565 | Fall-back condition for transmitter (No. of PPR reception) (V.34) | Sets the number of the PPR reception for fall-back condition in the V.34 transmission. | 0: Once 1: Twice 10: 11 times | 5 | 5 | 5 | 5 | 5 | 5 | 5 | 5 | 5 |

| Default | | | | | | | | | | | | | | | | Code |
|---------|-----|-----|-----|-----|-----|-----|-----|-----|-----|-----|-----|-----|-----|-----|-----|--------|
| FIN | ESP | AUT | CHE | SWE | DNK | NOR | PRT | FRA | GRC | POL | HUN | CZE | TUR | ZAF | TWN | |
| 1 | 1 | 1 | 1 | 1 | 1 | 1 | 1 | 1 | 1 | 1 | 1 | 1 | 1 | 1 | 1 | 13-511 |
| 1 | 1 | 1 | 1 | 1 | 1 | 1 | 1 | 1 | 1 | 1 | 1 | 1 | 1 | 1 | 1 | 13-512 |
| 0 | 0 | 0 | 0 | 0 | 0 | 0 | 0 | 0 | 0 | 0 | 0 | 0 | 0 | 0 | 0 | 13-517 |
| 0 | 0 | 0 | 0 | 0 | 0 | 0 | 0 | 0 | 0 | 0 | 0 | 0 | 0 | 0 | 0 | 13-518 |
| 0 | 0 | 0 | 0 | 0 | 0 | 0 | 0 | 0 | 0 | 0 | 0 | 0 | 0 | 0 | 0 | 13-519 |
| 0 | 0 | 0 | 0 | 0 | 0 | 0 | 0 | 0 | 0 | 0 | 0 | 0 | 0 | 0 | 0 | 13-564 |
| 5 | 5 | 5 | 5 | 5 | 5 | 5 | 5 | 5 | 5 | 5 | 5 | 5 | 5 | 5 | 5 | 13-565 |

| Default | | Code |
|---------|-----|--------|
| RUS | BRA | |
| 1 | 1 | 13-511 |
| 1 | 1 | 13-512 |
| 0 | 0 | 13-517 |
| 0 | 0 | 13-518 |
| 0 | 1 | 13-519 |
| 0 | 0 | 13-564 |
| 5 | 5 | 13-565 |

| Code | Adjustment | Function | Setting | Default | | | | | | | | |
|--------|---|--|---|---------|-----|-----|-----|-----|-----|-----|-----|-----|
| | | | | ASM | AUS | HKG | USA | DEU | GBR | ITA | BEL | NDL |
| 13-566 | Fall-back condition for receiver (No. of PPR transmission) (V.34) | Sets the number of the PPR transmission for fall-back condition in V.34 reception. | 0: Once 1: Twice ┆ 10: 11 times | 5 | 5 | 5 | 5 | 5 | 5 | 5 | 5 | 5 |
| 13-567 | TX attenuation value (V.34) | Sets the modem transmission attenuation level for the V.34 communication. The smaller the set value is, the higher the transmission level becomes. If errors occur frequently or training is not sent, the transmission level should be changed. | 0: 0 dB 1: -1 dB ┆ 15: -15 dB (Value decreased one by one) | 10 | 10 | 10 | 10 | 12 | 12 | 12 | 12 | 12 |
| 13-569 | Initial modem speed for V.34 communication | Sets the initial modem speed for V.34 communication. | 0: V.34 not installed 6: 14.4 kbps (V.34) 9: 21.6 kbps (V.34) 12: 28.8 kbps (V.34) 14: 33.6 kbps (V.34) | 14 | 14 | 14 | 14 | 14 | 14 | 14 | 14 | 14 |
| 13-571 | SUB/SEP/PWD functions | Sets SUB/SEP/PWB communication at data reception. | 0: OFF 1: ON | 1 | 1 | 1 | 1 | 1 | 1 | 1 | 1 | 1 |
| 13-574 | Coding capability (communication capability) | Sets the coding capability to be declared to the other side during communication. | 0: MH 1: MH/MR 2: MH/MR/MMR 3: MH/MR/MMR/JBIG | 3 | 3 | 3 | 3 | 3 | 3 | 3 | 3 | 3 |
| 13-575 | Reception end tone timing | Sets the timing to sound the reception end tone. | 0: OFF 1: When printing is completed 2: When reception is completed | 1 | 1 | 1 | 1 | 1 | 1 | 1 | 1 | 1 |

| Default | | | | | | | | | | | | | | | | Code |
|---------|-----|-----|-----|-----|-----|-----|-----|-----|-----|-----|-----|-----|-----|-----|-----|--------|
| FIN | ESP | AUT | CHE | SWE | DNK | NOR | PRT | FRA | GRC | POL | HUN | CZE | TUR | ZAF | TWN | |
| 5 | 5 | 5 | 5 | 5 | 5 | 5 | 5 | 5 | 5 | 5 | 5 | 5 | 5 | 5 | 5 | 13-566 |
| 12 | 12 | 12 | 12 | 12 | 12 | 12 | 12 | 12 | 12 | 12 | 12 | 12 | 10 | 10 | 13 | 13-567 |
| 14 | 14 | 14 | 14 | 14 | 14 | 14 | 14 | 14 | 14 | 14 | 14 | 14 | 14 | 14 | 14 | 13-569 |
| 1 | 1 | 1 | 1 | 1 | 1 | 1 | 1 | 1 | 1 | 1 | 1 | 1 | 1 | 1 | 1 | 13-571 |
| 3 | 3 | 3 | 3 | 3 | 3 | 3 | 3 | 3 | 3 | 3 | 3 | 3 | 3 | 3 | 3 | 13-574 |
| 1 | 1 | 1 | 1 | 1 | 1 | 1 | 1 | 1 | 1 | 1 | 1 | 1 | 1 | 1 | 1 | 13-575 |

| Default | | Code |
|---------|-----|--------|
| RUS | BRA | |
| 5 | 5 | 13-566 |
| 12 | 10 | 13-567 |
| 14 | 14 | 13-569 |
| 1 | 1 | 13-571 |
| 3 | 3 | 13-574 |
| 1 | 1 | 13-575 |

| Code | Adjustment | Function | Setting | Default | | | | | | | | |
|--------|---|--|--|---------|-----|-----|-----|-----|-----|-----|-----|-----|
| | | | | ASM | AUS | HKG | USA | DEU | GBR | ITA | BEL | NDL |
| 13-576 | V.34 symbol rate | Sets the initial value for the symbol rate for V.34 communication. Maximum modem speed for each setting are as follows. 2,400: 21,600 bps, 2,800: 26,400 bps, 3,000: 28,800 bps, 3,200: 31,200 bps, 3,492: 33,600 bps | 0: 2,400 1: 2,800 2: 3,000 3: 3,200 4: 3,429 | 4 | 4 | 4 | 4 | 4 | 4 | 4 | 4 | 4 |
| 13-577 | V.34 fall-back method | Sets the number of steps in which the modem speed is fall-backed. | 0: 1 step 1: 2 step 2: 3 step | 0 | 0 | 0 | 0 | 0 | 0 | 0 | 0 | 0 |
| 13-578 | Recovery transmission | Sets whether the recovery transmission is performed or not. | 0: OFF 1: ON | 0 | 0 | 0 | 0 | 0 | 0 | 0 | 0 | 0 |
| 13-580 | Protocol type | Selects the type of the T.30 procedure. DTS is only for Europe. | 0: ITU-T 1: DTS | 0 | 0 | 0 | 0 | 1 | 0 | 0 | 0 | 0 |
| 13-581 | Batch transmission | Batch transmission is performed or not. | 0: OFF 1: ON | 1 | 1 | 1 | 1 | 1 | 1 | 1 | 1 | 1 |
| 13-584 | Alternation output | Sets the alternation output. | 0: OFF 1: ON | 0 | 0 | 0 | 0 | 0 | 0 | 0 | 0 | 0 |
| 13-585 | Search function for receiver name on transmission journal | Sets if the search function for the receiver name on the transmission journal is used. (Relay reception report is not supported.) | 0: OFF 1: ON | 0 | 0 | 0 | 0 | 0 | 0 | 0 | 0 | 0 |
| 13-586 | Communication end tone volume | Sets the volume of the communication end tone. | 0: Level 0 (Min) 1: 7: Level 7 (Max) | 4 | 4 | 4 | 4 | 4 | 4 | 4 | 4 | 4 |

| Default | | | | | | | | | | | | | | | | Code |
|---------|-----|-----|-----|-----|-----|-----|-----|-----|-----|-----|-----|-----|-----|-----|-----|--------|
| FIN | ESP | AUT | CHE | SWE | DNK | NOR | PRT | FRA | GRC | POL | HUN | CZE | TUR | ZAF | TWN | |
| 4 | 4 | 4 | 4 | 4 | 4 | 4 | 4 | 4 | 4 | 4 | 4 | 4 | 4 | 4 | 4 | 13-576 |
| 0 | 0 | 0 | 0 | 0 | 0 | 0 | 0 | 0 | 0 | 0 | 0 | 0 | 0 | 0 | 0 | 13-577 |
| 0 | 0 | 0 | 0 | 0 | 0 | 0 | 0 | 0 | 0 | 0 | 0 | 0 | 0 | 0 | 0 | 13-578 |
| 0 | 0 | 0 | 0 | 0 | 0 | 0 | 0 | 0 | 0 | 0 | 0 | 0 | 0 | 0 | 0 | 13-580 |
| 1 | 1 | 1 | 1 | 1 | 1 | 1 | 1 | 1 | 1 | 1 | 1 | 1 | 1 | 1 | 1 | 581 |
| 0 | 0 | 0 | 0 | 0 | 0 | 0 | 0 | 0 | 0 | 0 | 0 | 0 | 0 | 0 | 0 | 13-584 |
| 0 | 0 | 0 | 0 | 0 | 0 | 0 | 0 | 0 | 0 | 0 | 0 | 0 | 0 | 0 | 0 | 13-585 |
| 4 | 4 | 4 | 4 | 4 | 4 | 4 | 4 | 4 | 4 | 4 | 4 | 4 | 4 | 4 | 4 | 13-586 |

| Default | | Code |
|---------|-----|--------|
| RUS | BRA | |
| 4 | 4 | 13-576 |
| 0 | 0 | 13-577 |
| 0 | 0 | 13-578 |
| 1 | 0 | 13-580 |
| 1 | 1 | 581 |
| 0 | 0 | 13-584 |
| 0 | 0 | 13-585 |
| 4 | 4 | 13-586 |

| Code | Adjustment | Function | Setting | Default | | | | | | | | |
|--------|--------------------------------------|--|---|---------|-----|-----|-----|-----|-----|-----|-----|-----|
| | | | | ASM | AUS | HKG | USA | DEU | GBR | ITA | BEL | NDL |
| 13-587 | Communication end tone sounding time | Sets how long the communication end tone sounds. | 0: OFF 1: 0.5 sec 2: 1.0 sec 3: 1.5 sec 4: 2.0 sec 5: 2.5 sec 6: 3.0 sec 7: 3.5 sec 8: 4.0 sec 9: 4.5 sec 10: 5.0 sec | 2 | 2 | 2 | 2 | 2 | 2 | 2 | 2 | 2 |

| Default | | | | | | | | | | | | | | | | Code |
|---------|-----|-----|-----|-----|-----|-----|-----|-----|-----|-----|-----|-----|-----|-----|-----|--------|
| FIN | ESP | AUT | CHE | SWE | DNK | NOR | PRT | FRA | GRC | POL | HUN | CZE | TUR | ZAF | TWN | |
| 2 | 2 | 2 | 2 | 2 | 2 | 2 | 2 | 2 | 2 | 2 | 2 | 2 | 2 | 2 | 2 | 13-587 |

| Default | | Code |
|---------|-----|--------|
| RUS | BRA | |
| 2 | 2 | 13-587 |

700-749 Adjustment of telephone function

| Code | Adjustment | Function | Setting | Default | | | | | | | | |
|--------|---|---|---|---------|-----|-----|-----|-----|-----|-----|-----|-----|
| | | | | ASM | AUS | HKG | USA | DEU | GBR | ITA | BEL | NDL |
| 13-722 | Pseudo ring-back tone waveform selection | Selects the ring-back tone waveform output in the TEL/FAX mode. | 0: Alternate transmission with 2 frequency-wave (405/432 Hz) 1: Single tone (405 Hz) | 0 | 0 | 0 | 0 | 0 | 0 | 0 | 0 | 0 |
| 13-723 | ATT setting when RBT is transmitted | Sets the transmission level of the ring-back tone output in the TEL/FAX mode. | 10: -10 dB 15: -15 dB (per -1 dB) | 10 | 13 | 10 | 10 | 13 | 13 | 13 | 13 | 13 |
| 13-724 | Pseudo ring transmission function setting | Sets the number of calling operator in the TEL/FAX mode. | 0: Once 1: Once 15: 15 times | 6 | 6 | 6 | 6 | 6 | 6 | 6 | 6 | 6 |
| 13-725 | CNG detection | Selects the frequency for CNG filter detection in the TEL/FAX mode. Narrow the frequency if false detection occurs due to sound, etc. | 0: 1100 ± 38 Hz 1: 1100 ± 30 Hz 2: 1100 ± 24 Hz | 2 | 2 | 2 | 2 | 2 | 2 | 2 | 2 | 2 |
| 13-726 | Number of detection determination setting | Sets the number of CNG detection before starting automatic reception in the TEL/FAX mode. | 0: Once 1: Twice | 1 | 1 | 1 | 1 | 1 | 1 | 1 | 1 | 1 |

| Default | | | | | | | | | | | | | | | | Code |
|---------|-----|-----|-----|-----|-----|-----|-----|-----|-----|-----|-----|-----|-----|-----|-----|--------|
| FIN | ESP | AUT | CHE | SWE | DNK | NOR | PRT | FRA | GRC | POL | HUN | CZE | TUR | ZAF | TWN | |
| 0 | 0 | 0 | 0 | 0 | 0 | 0 | 0 | 0 | 0 | 0 | 0 | 0 | 0 | 0 | 0 | 13-722 |
| 13 | 13 | 13 | 13 | 13 | 13 | 13 | 13 | 13 | 13 | 13 | 13 | 13 | 10 | 10 | 15 | 13-723 |
| 6 | 6 | 6 | 6 | 6 | 6 | 6 | 6 | 6 | 6 | 6 | 6 | 6 | 6 | 6 | 6 | 13-724 |
| 2 | 2 | 2 | 2 | 2 | 2 | 2 | 2 | 2 | 2 | 2 | 2 | 2 | 2 | 2 | 2 | 13-725 |
| 1 | 1 | 1 | 1 | 1 | 1 | 1 | 1 | 1 | 1 | 1 | 1 | 1 | 1 | 1 | 1 | 13-726 |

| Default | | Code |
|---------|-----|--------|
| RUS | BRA | |
| 0 | 0 | 13-722 |
| 13 | 10 | 13-723 |
| 6 | 6 | 13-724 |
| 2 | 2 | 13-725 |
| 1 | 1 | 13-726 |

900-999 Adjustment of system setting

| Code | Adjustment | Function | Setting | Default | | | | | | | | |
|--------|--|--|--|---------|-----|-----|-----|-----|-----|-----|-----|-----|
| | | | | ASM | AUS | HKG | USA | DEU | GBR | ITA | BEL | NDL |
| 13-922 | Format of Fax destination display after phase B | Sets either "the phone number transmitted by CSI signal" or "the name of destination in the address book or the dialed phone number" for the destination display after phase B in the transmission control. | 0: Phone number by CSI signal 1: Name of destination in the address book or the dialed phone number | 0 | 0 | 0 | 0 | 0 | 0 | 0 | 0 | 0 |
| 13-923 | Retrieval method of sender's address name by TSI signal and the address book | Sets either the partial or perfect match retrieval of the phone number transmitted by TSI signal and the registered phone number in the address book to search for sender's address name. (For save file name at the time of the transfer. But SaveAsFile or e-filing setting only. E-mail transmission is not supported.) | 0: Partial match retrieval of the phone number by TSI signal and the registered phone number 1: Perfect match retrieval of the phone number by TSI signal and the registered phone number | 0 | 0 | 0 | 0 | 0 | 0 | 0 | 0 | 0 |
| 13-924 | Duplex printing for received fax documents at forwarding destination | Sets whether duplex printing is performed or not to output the received fax documents at the forwarding destination, when ON is selected at "Duplex printing for received documents" (code: 518). | 0: OFF 1: ON | 0 | 0 | 0 | 0 | 0 | 0 | 0 | 0 | 0 |
| 13-925 | Image attachment on result report at Mailbox (F-code) data transmission | Sets whether an image is not attached on the result report only when Mailbox (F-code) data is transmitted in the confidential box or bulletin board. | 0: Depend on result report setting 1: Not attached the image | 0 | 0 | 0 | 1 | 0 | 0 | 0 | 0 | 0 |

| Default | | | | | | | | | | | | | | | | Code |
|---------|-----|-----|-----|-----|-----|-----|-----|-----|-----|-----|-----|-----|-----|-----|-----|--------|
| FIN | ESP | AUT | CHE | SWE | DNK | NOR | PRT | FRA | GRC | POL | HUN | CZE | TUR | ZAF | TWN | |
| 0 | 0 | 0 | 0 | 0 | 0 | 0 | 0 | 0 | 0 | 0 | 0 | 0 | 0 | 0 | 0 | 13-922 |
| 0 | 0 | 0 | 0 | 0 | 0 | 0 | 0 | 0 | 0 | 0 | 0 | 0 | 0 | 0 | 0 | 13-923 |
| 0 | 0 | 0 | 0 | 0 | 0 | 0 | 0 | 0 | 0 | 0 | 0 | 0 | 0 | 0 | 0 | 13-924 |
| 0 | 0 | 0 | 0 | 0 | 0 | 0 | 0 | 0 | 0 | 0 | 0 | 0 | 0 | 0 | 0 | 13-925 |

| Default | | Code |
|---------|-----|--------|
| RUS | BRA | |
| 0 | 0 | 13-922 |
| 0 | 0 | 13-923 |
| 0 | 0 | 13-924 |
| 0 | 1 | 13-925 |

| Code | Adjust- ment | Function | Setting | Default | | | | | | | | |
|--------|--|--|--|---------|-----|-----|-----|-----|-----|-----|-----|-----|
| | | | | ASM | AUS | HKG | USA | DEU | GBR | ITA | BEL | NDL |
| 13-926 | Paper width declaration in paper empty state | Selects either size, A4 or B4, to declare the paper size when "0: Paper" has been selected for the code 346 and paper in every drawer is run out. | 0: A4 1: B4 | 0 | 0 | 0 | 0 | 0 | 0 | 0 | 0 | 0 |
| 13-927 | B4 declaration on B5 recording paper at data reception | Sets whether B4-size data is printed out on B5 recording paper or not. (The data size is not reduced. The later half of the original B4-size data is cut off.) | 0: Not printed on B5 1: Printed on B5 | 0 | 0 | 0 | 0 | 0 | 0 | 0 | 0 | 0 |

| Default | | | | | | | | | | | | | | | | Code |
|---------|-----|-----|-----|-----|-----|-----|-----|-----|-----|-----|-----|-----|-----|-----|-----|--------|
| FIN | ESP | AUT | CHE | SWE | DNK | NOR | PRT | FRA | GRC | POL | HUN | CZE | TUR | ZAF | TWN | |
| 0 | 0 | 0 | 0 | 0 | 0 | 0 | 0 | 0 | 0 | 0 | 0 | 0 | 0 | 0 | 0 | 13-926 |
| 0 | 0 | 0 | 0 | 0 | 0 | 0 | 0 | 0 | 0 | 0 | 0 | 0 | 0 | 0 | 0 | 13-927 |

| Default | | Code |
|---------|-----|--------|
| RUS | BRA | |
| 0 | 0 | 13-926 |
| 0 | 0 | 13-927 |

| Code | Adjustment | Function | Setting | Default | | | | | | | | |
|--------|-------------------------|--|-----------------|---------|-----|-----|-----|-----|-----|-----|-----|-----|
| | | | | ASM | AUS | HKG | USA | DEU | GBR | ITA | BEL | NDL |
| 13-940 | UI display for [Tx ATT] | Sets whether the [Tx ATT] button is displayed in the Phone Book registration screen or not. When "16" is set for the TX attenuation, the transmission level of the equipment is determined by the setting values of the following items. 13-325: TX attenuation value (V.17) (Line 1) 13-430: TX attenuation value (V.17) (Line 2) 13-567: TX attenuation value (V.34) (Line 1) 13-616: TX attenuation value (V.34) (Line 2) | 0: OFF 1: ON | 0 | 0 | 0 | 0 | 0 | 0 | 0 | 0 | 0 |

| Default | | | | | | | | | | | | | | | | Code |
|---------|-----|-----|-----|-----|-----|-----|-----|-----|-----|-----|-----|-----|-----|-----|-----|--------|
| FIN | ESP | AUT | CHE | SWE | DNK | NOR | PRT | FRA | GRC | POL | HUN | CZE | TUR | ZAF | TWN | |
| 0 | 0 | 0 | 0 | 0 | 0 | 0 | 0 | 0 | 0 | 0 | 0 | 0 | 0 | 0 | 0 | 13-940 |

| Default | | Code |
|---------|-----|--------|
| RUS | BRA | |
| 0 | 0 | 13-940 |

| Code | Adjustment | Function | Setting | Default | | | | | | | | |
|--------|--|--|---|---------|-----|-----|-----|-----|-----|-----|-----|-----|
| | | | | ASM | AUS | HKG | USA | DEU | GBR | ITA | BEL | NDL |
| 13-941 | UI display for TTI ON/OFF | Sets whether the button is displayed in the TTI setting screen. | 0: OFF 1: ON | 1 | 1 | 1 | 0 | 0 | 0 | 0 | 0 | 0 |
| 13-944 | Error code reservation for protocol trace list | Key in an error code decimally to print out the protocol trace list not for each communication but only for that specific error. | 0-255:Error code | 0 | 0 | 0 | 0 | 0 | 0 | 0 | 0 | 0 |
| 13-955 | Return loss setting | Selects the NCU termination circuit. | 0: ASIA 1: AUS 2: Others 3: EUR | 0 | 1 | 0 | 0 | 3 | 3 | 3 | 3 | 3 |
| 13-962 | FCC type for TTI format | Sets whether FCC type for TTI format. | 0: OFF 1: ON | 1 | 1 | 1 | 1 | 1 | 1 | 1 | 1 | 1 |
| 13-970 | Format of address for transmission/reception journal | Sets whether the format of address for transmission/reception journal. | Priority of recording items in journal 0: Name of address-book, or Direct dialing number 1: Receiver inform (CSI), or Name of address-book or Direct dialing number 2: Dialing number (direct or address-book) | 0 | 0 | 0 | 2 | 1 | 1 | 1 | 1 | 1 |
| 13-971 | Short protocol | Sets the short protocol. | 0: OFF 1: ON | 1 | 1 | 1 | 1 | 1 | 1 | 1 | 1 | 1 |

| Default | | | | | | | | | | | | | | | | Code |
|---------|-----|-----|-----|-----|-----|-----|-----|-----|-----|-----|-----|-----|-----|-----|-----|--------|
| FIN | ESP | AUT | CHE | SWE | DNK | NOR | PRT | FRA | GRC | POL | HUN | CZE | TUR | ZAF | TWN | |
| 0 | 0 | 0 | 0 | 0 | 0 | 0 | 0 | 0 | 0 | 0 | 0 | 0 | 1 | 1 | 0 | 13-941 |
| 0 | 0 | 0 | 0 | 0 | 0 | 0 | 0 | 0 | 0 | 0 | 0 | 0 | 0 | 0 | 0 | 13-944 |
| 3 | 3 | 3 | 3 | 3 | 3 | 3 | 3 | 3 | 3 | 3 | 3 | 3 | 0 | 0 | 0 | 13-955 |
| 1 | 1 | 1 | 1 | 1 | 1 | 1 | 1 | 1 | 1 | 1 | 1 | 1 | 1 | 1 | 1 | 13-962 |
| 1 | 1 | 1 | 1 | 1 | 1 | 1 | 1 | 1 | 1 | 1 | 1 | 1 | 0 | 0 | 0 | 13-970 |
| 1 | 1 | 1 | 1 | 1 | 1 | 1 | 1 | 1 | 1 | 1 | 1 | 1 | 1 | 1 | 1 | 13-971 |

| Default | | Code |
|---------|-----|--------|
| RUS | BRA | |
| 0 | 0 | 13-941 |
| 0 | 0 | 13-944 |
| 3 | 0 | 13-955 |
| 1 | 1 | 13-962 |
| 1 | 2 | 13-970 |
| 1 | 1 | 13-971 |

2.5 FAX Clearing Mode (1*)

Various FAX memories are initialized in the FAX clearing mode (1*).

1) Memory Areas

- User registration area (SRAM)
 - ID registration area
 - Home position
- Image data area (HDD, SRAM)
 - Transmission file
 - Reception file
 - Image data file management area
 - F-code box information
- System setting area (NVRAM)
 - Settings in the Function Mode (13) Areas 100 - 999

2) Types of Initialization

- FAX Set Up
 - User registration area (SRAM)
 - Initialized so that there are no data stored.
 - System setting area (NVRAM)
 - Values are reset to the default settings.
- Clearing the image data
 - Image data area (HDD, SRAM)
 - Initialized so that there are no data stored.
 - Job clear
- Clearing the system setting area
 - System setting area (NVRAM)
 - Values are reset to the default settings.

[Operation procedure]

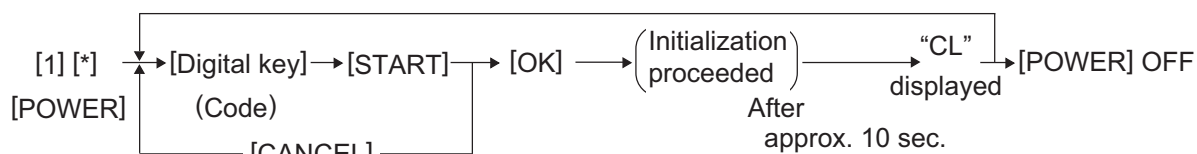


Fig. 2-10

- * When “CL” is displayed instead of the set number, that indicates that the machine is in the standby mode.

Initialization codes for the FAX

| Code | Element | Contents | Mode | Image quality mode | Default |
|--------|---------|----------------------------------|------|--------------------|---------|
| 1*-100 | MAINT | FAX Set Up | FAX | - | - |
| 1*-102 | MAINT | Clearing the image data | FAX | - | - |
| 1*-103 | MAINT | Clearing the system setting area | FAX | - | - |

Note:

It takes about 20 seconds until the digital keys become operable after the power has been turned ON while [1] and [*] are pressed simultaneously.

Note:

Before performing the initialization, confirm that the destination value is correct in the Setting Mode (08) described in the P. 2-6 "2.3 Setting Mode (08)".

If the initialization is performed with the wrong destination setting, the default value of the Function Mode is changed to that for the wrong destination.

3. TROUBLESHOOTING

3.1 Diagnosis Over Telephone

Most problems end users inquire are the results of the following. Therefore, ask the nature of the trouble (in detail) first to seek the cause. These questions can lead to a speedy resolution of the trouble without the need for a service technician.

- **Simple mis-operation**

A trouble caused by a simple mis-operation can be solved by the user alone with an appropriate instruction through the telephone.

- **A failure with the telephone line**

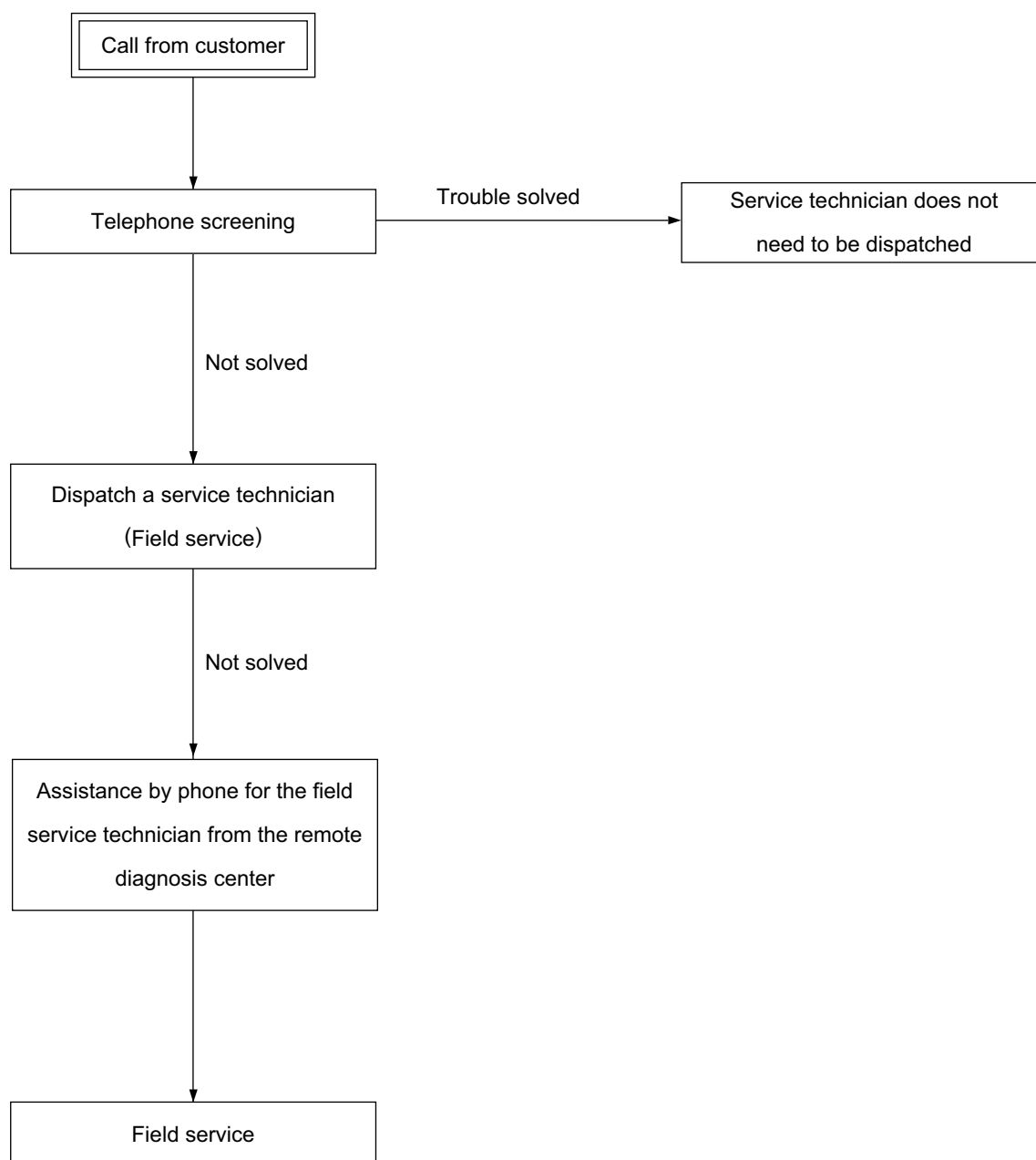
The machine's condition can be checked by the user's operating sending/receiving documents to/from another FAX unit.

- **A failure with the other party's machine**

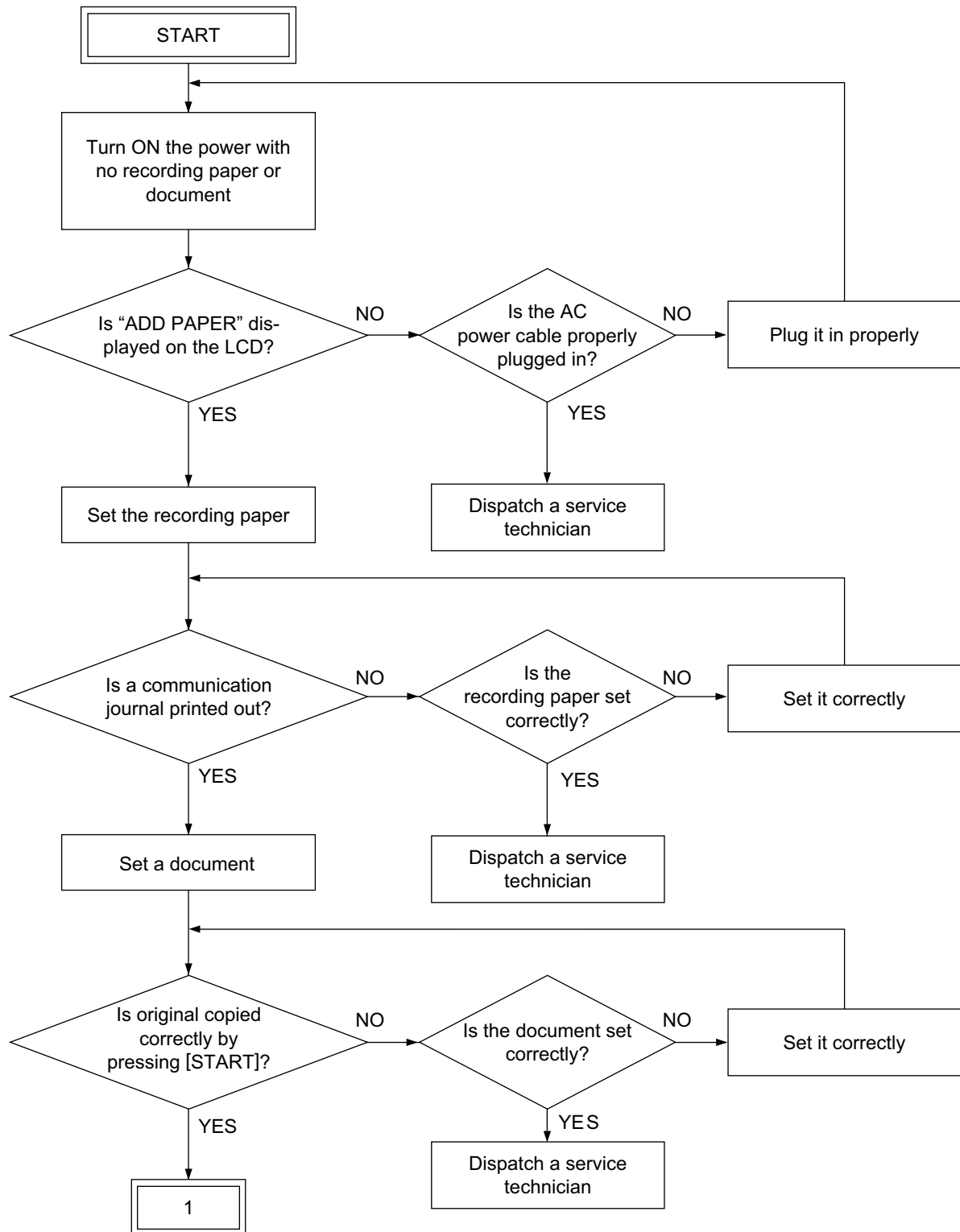
The other party's machine's condition can be checked by the user's operating sending/receiving documents from/to the user's machine.

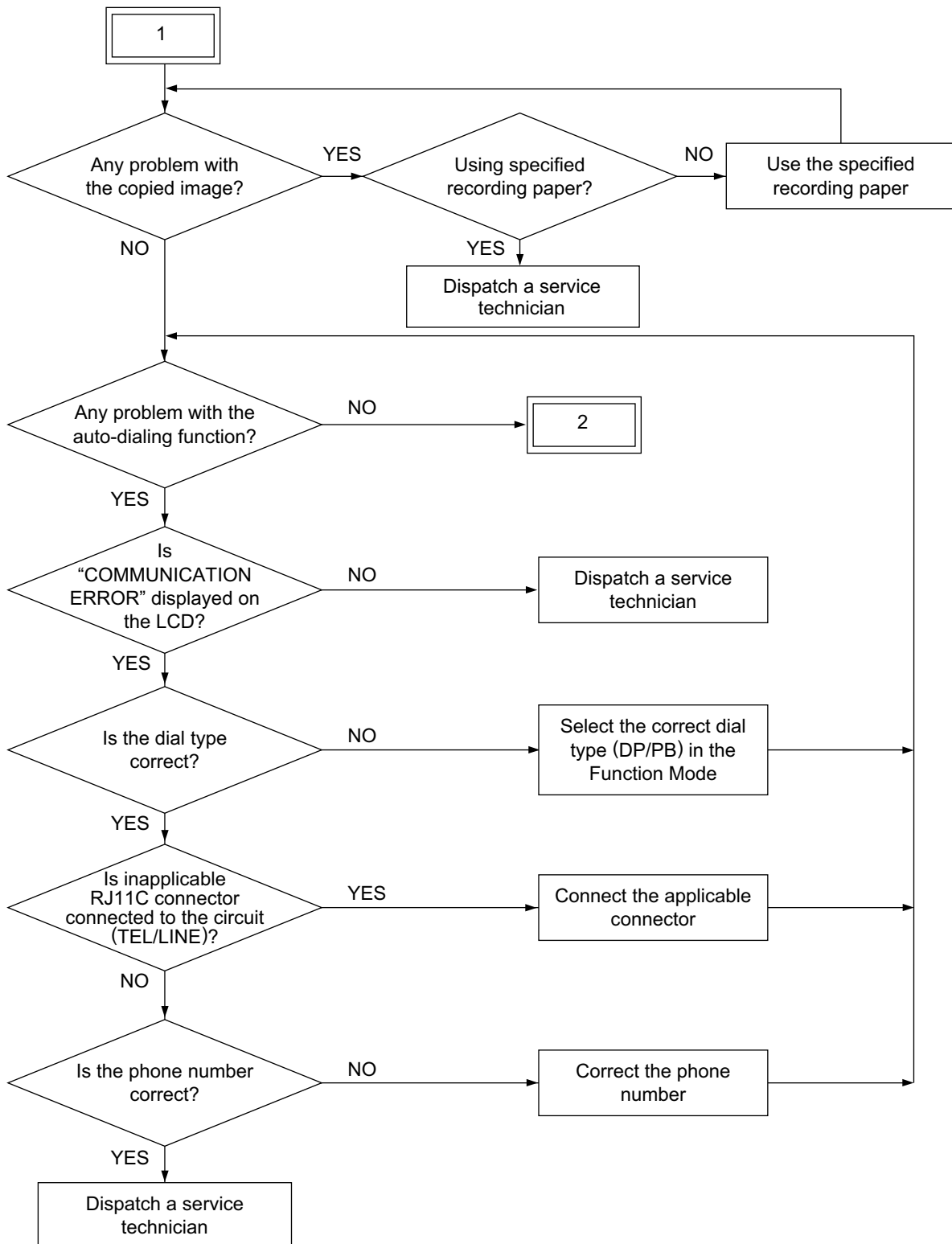
Also, by verifying the error message in the LCD display or the error code on the Journal with the user, the nature of the trouble can be confirmed. This information is important in finding the cause of trouble. Whenever it can be obtained from the user, respond on the telephone by tracing the "📖 P. 3-3 "3.3 Flow Chart for Recommended Telephone Screening"". This will help the service technician to be prepared for the necessary service requirements.

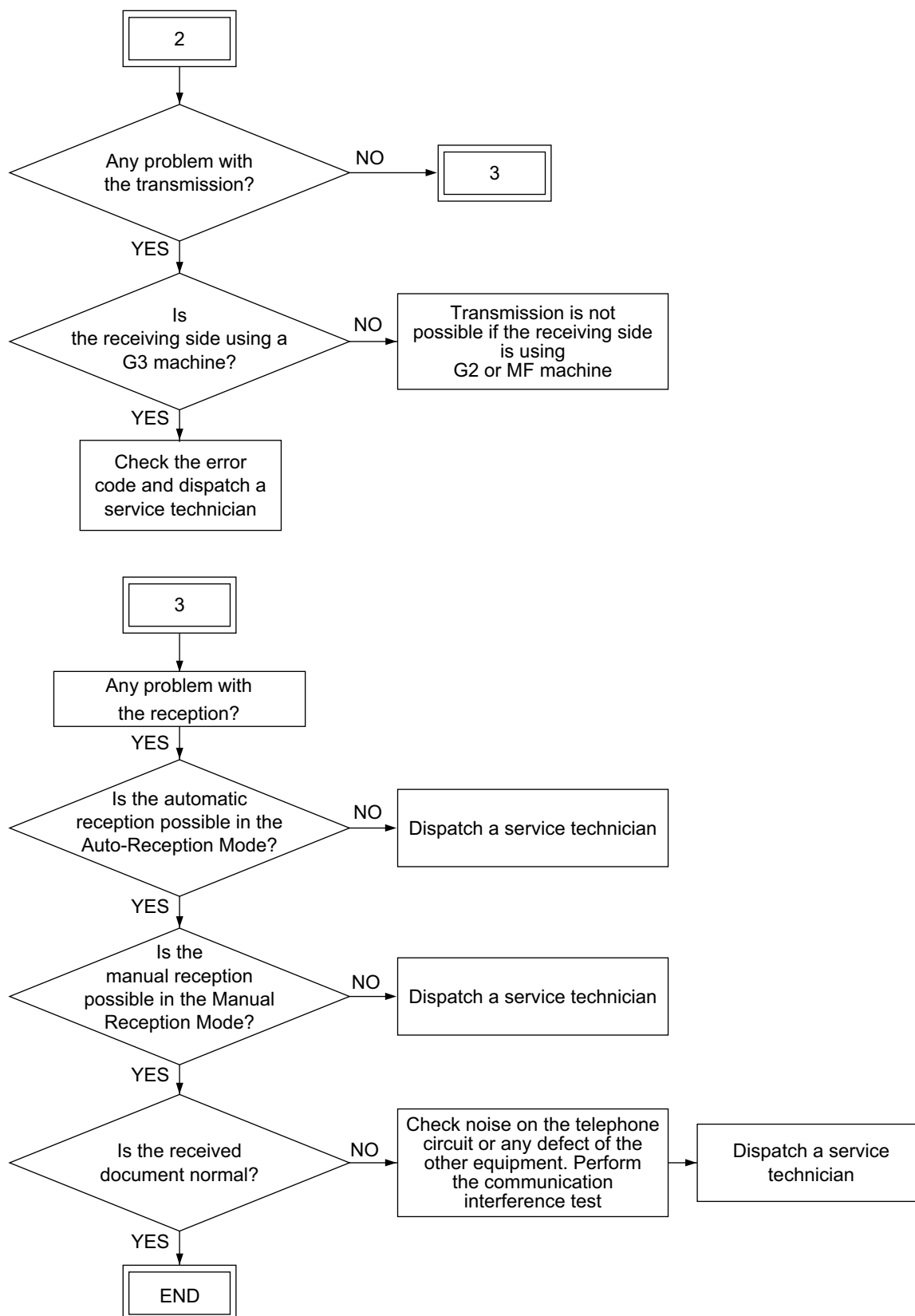
3.2 Recommend Flow Chart for Field Service



3.3 Flow Chart for Recommended Telephone Screening







3.4 Error Analysis Flow

3.4.1 Self-Diagnosis function

Service technicians can figure out the contents of the error with the following information:

- 1) Display on the LCD panel
- 2) Error code on the transmission/reception journal

3.4.2 Precautions for diagnosis

Service technicians should output the Address Book / Group Number Information and Function List for Maintenance. Confirm that no received document data are stored in the memory by checking the "Memory RX" LED and Reservation List.

Turn OFF the power and check the following items before starting the diagnosis.:

- Check if the power cable is properly plugged in.
- Check if the connectors are securely connected.
- Pay full attention to an electric shock at the power section and a short circuit of the conductor pattern on the board when servicing with the power cable connected to the outlet while the cover is taken off.
- Make sure that there is not any connector remains disconnected or loosened screw after the error analysis.
- Make sure that the machine operates properly with a communication test every time the error analysis has been performed.

Notes:

- Before replacing the parts, confirm that there is no data to be transmitted or no received document in the memory. Turn OFF the power and unplug the power cable.
- Do not touch the terminal of the connectors. Otherwise, a poor connection may be caused.

3.5 Fault Analysis

3.5.1 Power-ON is not possible

- 1) Check if the power cable is plugged into an appropriate outlet (of the correct voltage).
- 2) Check if the rated voltages are being output from the switching power supply. When the measured voltage is not the rated value, replace the switching power supply.
- 3) Check if each connector between the DSP board and the SYS board is disconnected.
- 4) Check if each connector between the SYS board and the switching power supply is disconnected.
- 5) Check if each connector pin is removed or the harness is broken.
- 6) Check if any conductor pattern on the switching power supply, and SYS board is open- or short-circuited.
- 7) Replace the DSP board.
- 8) Replace the SYS board.

3.5.2 Original transport error for RADF

Check the error code and refer to the TROUBLESHOOTING of Service Handbook for the equipment.

3.5.3 Recording paper transport error

Check the error code and refer to the TROUBLESHOOTING of Service Handbook for the equipment.

3.5.4 Image trouble

Check the image and refer to the TROUBLESHOOTING of Service Handbook for the equipment.

3.5.5 Communication error

Communication errors may occur when the condition of a particular phone circuit happens to be bad at the time of attempting the communication job. Therefore, do the communication over again. If communication errors occur too many times, prepare another (operational) FAX unit and check the communication condition among the three FAX units, thus analyzing the troubles.

A communication error occurs between A and B.

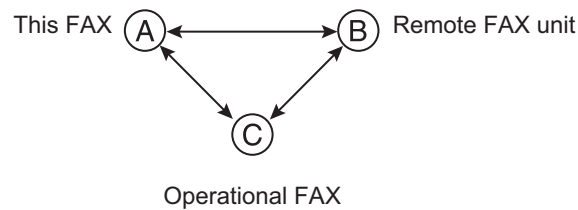


Fig. 3-1

- 1) If normal communications are possible between A and C, and the communication trouble occurs B and C, it can be assumed that FAX B is malfunctioning.
- 2) If normal communications are possible between B and C, and the communication trouble occurs A and C, it can be assumed that FAX A is malfunctioning. Therefore, adjust the transmission attenuator value (13-325, 13-430, 13-567, 13-616) and the cable equalizer value (13-328, 13-433).
- 3) If normal communications are possible between A and C and between B and C, it can be assumed that there is a problem in the line between A and B.

3.6 Lists Required at Problem in the Field

Output the following lists when problem occurs in the field. They are described in the order of the priority the most important one come first in this section. It is not necessary to output these lists immediately after the trouble has occurred, but they must be prepared for any kind of trouble regarding the FAX operation.

[Precaution]

Disconnect the telephone line to stop the communication when trouble occurs. Since the only last communication is reported on the protocol trace list, if the telephone line is not disconnected immediately after the trouble has occurred, next communication might come in before the line is disconnected and be printed out instead of the communication in question.

Do not turn OFF the power before printing the protocol trace list and memory dump list.

Otherwise, the information will be lost.

3.6.1 List printing procedure

- 1) Enter the Service Mode.
 - Press the [USER FUNCTIONS] button.
 - With the [USER FUNCTIONS] menu displayed, enter the Service Mode password provided during product training
 - The SERVICE TECHNICIAN PASSWORD menu appears. Press [OK].
(Enter a password if one is set. Then press [OK].)
 - The SERVICE MODE menu appears.
- 2) Select "FAX LIST PRINT MODE" and then press [NEXT].

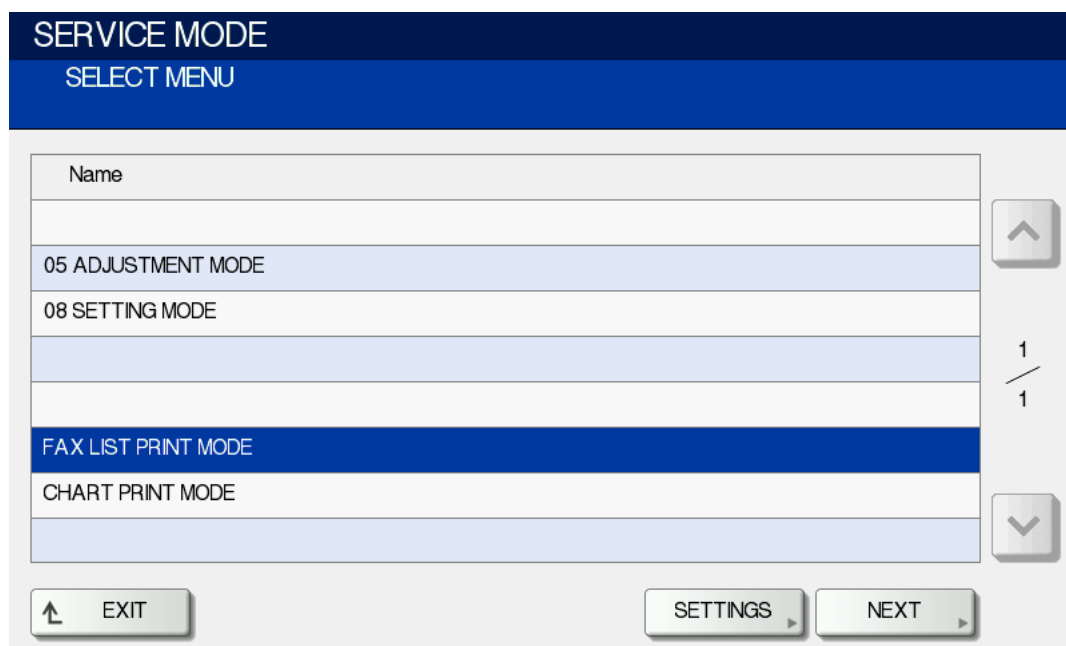


Fig. 3-2

Remark:

CHART PRINT MODE appears only for the MC760/MC770/MC780/MPS3537mc/MPS4242mc/ES7480MFP.

3) Select the desired list and then press [PRINT].

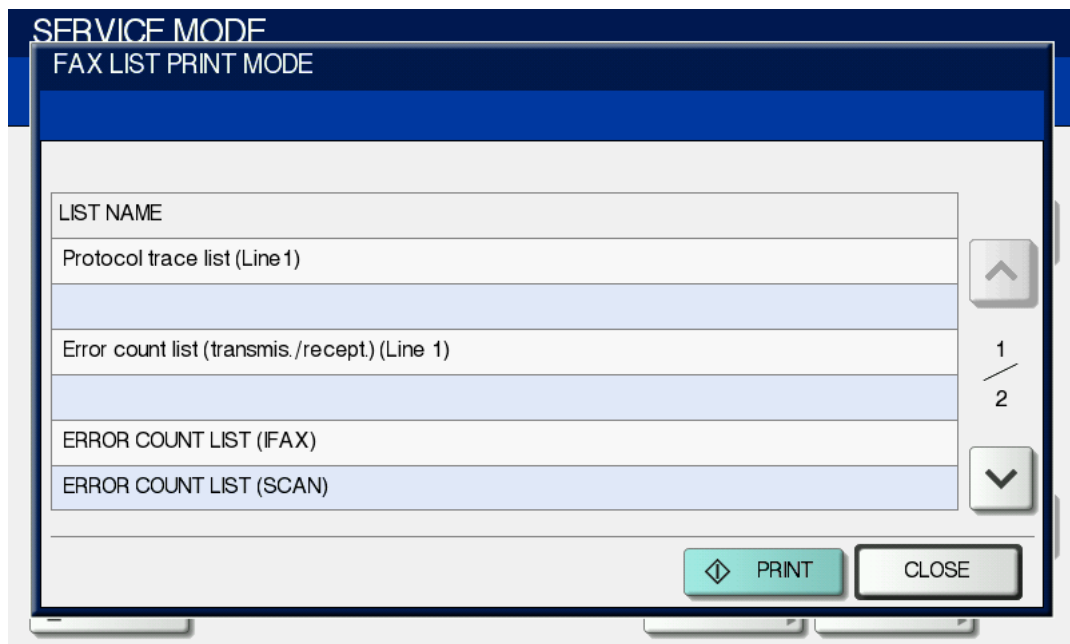


Fig. 3-3

The FAX LIST PRINT MODE menu contains the following lists to select:

- Protocol trace list (Line 1)
- Error count list (transmis./recept.) (Line 1)
- ERROR COUNT LIST (Internet FAX)
- ERROR COUNT LIST (SCAN)
- Function list for Maintenance
- Memory dump list (System)
- Memory dump list (FAX)
- SUPPLY ORDER LIST

3.7 Other Information Required for Error Analysis

The following information is also needed to analyze the malfunction (especially a communication error). Check the circles below if they are applicable.

1) If the error is cleared or not.

- Cleared by turning ON/OFF the power.
- Cleared by performing "Clearing the image data area (1*–102)".

Note:

The image data (including printer data other than FAX data) and the job being performed are erased by this operation.

- Cleared by replacing the board.
- Not cleared.

2) Frequency of occurrence

- Frequently (occurring daily or always)
- Sometimes (about once a week)
- Only once

3) When a communication error is occurring, turn ON the circuit monitor for the line 1 (13–338), and check the condition of the FAX communication with the tone from the speaker.

Note:

Turn OFF the circuit monitoring function after the checking is finished (13–338: 0).

- Signals from the transmitter and that from the receiver clash.
→ Check the model name of the other party's machine.
- Noise occurring on the circuit.
→ Ask the telephone (or telecommunications) company if the line condition is normal.
- Busy tone is heard from the other party during the communication.
→ Ask by phone if the other party's machine has any problem. If it does not, check its model name.
- Others (describe condition): _____

4) Condition of the machine when the problem occurred

- Display
Control panel:
Copying operation screen FAX operation screen Printing operation screen
Energy saver screen "Auto Power Off" screen

Describe the items displayed on the control panel in detail: _____

Status of LEDs:

"MEMORY RX" ON "Communicating" ON
Power ON

- State of the machine

Availability of the recording paper:

| | | | | |
|----------------------|---------------|---------------|---------------|-----|
| 1st drawer (size =) | No paper | Paper present | | |
| 2nd drawer (size =) | No paper | Paper present | | |
| 3rd drawer (size =) | Not installed | No paper | Paper present | LCF |
| 4th drawer (size =) | Not installed | No paper | Paper present | LCF |

Configuration of the units

(Illustrate the units connected to your machine such as the telephone lines, exchange system, telephones, modems, etc.)

- Settings of the Auto Power Save and Auto Shut Off
 - Auto-clear timer (08-9110) =
 - Auto Power Save (08-9111) =
 - Auto Shut OFF (08-9112) =

4. PRECAUTIONS FOR INSTALLATION OF FAX UNIT

4.1 Installation of FAX Unit

After unpacking and installing the FAX unit following the unpacking/setup instructions, be sure to perform "FAX Clearing Mode / FAX Set Up" described with the same instructions. The unit is not turned ON without this operation.

[Operation procedure]

Perform the following operation after setting the country/region in 08-9000 and 08-9001.

[1] [*] [POWER] → [100] → [START] (It takes about 20 seconds for the digital keys to be operable after the power is turned ON.) (It takes about 10 seconds until the display changes from '100' to 'CL'.)

[About FAX Clearing Mode / FAX Set Up]

When "FAX Set Up" is performed, the following operations are performed:

Data in the ID registration, home position stored in the SRAM on the SYS board are erased.

The system setting area is initialized (the settings are reset to the default values.)

4.2 Country/Region Code

Set the country/region code after the installation of the FAX unit is finished.

Note:

All data stored in the SRAM are erased when the country/region code is set/changed.

Setting the country/region code

- 1) Turn ON the power while pressing [0] and [8] simultaneously.
- 2) Key in "9001", and press [START] button.
- 3) Key in a code, and they press the [ENTER].
(2.3 Setting Mode (08))

| Country/Region | Code |
|--------------------|------|
| ASM: Asia | 1 |
| AUS: Australia | 2 |
| HKG: Hong Kong | 3 |
| USA: U.S.A/Canada | 4 |
| DEU: Germany | 5 |
| GBR: Great Britain | 6 |
| ITA: Italy | 7 |
| BEL: Belgium | 8 |
| NDL: Holland | 9 |
| FIN: Finland | 10 |
| ESP: Spain | 11 |
| AUT: Austria | 12 |
| CHE: Switzerland | 13 |
| SWE: Sweden | 14 |
| DNK: Denmark | 15 |
| NOR: Norway | 16 |
| PRT: Portugal | 17 |
| FRA: France | 18 |
| GRC: Greece | 19 |
| POL: Poland | 20 |
| HUN: Hungary | 21 |
| CZE: Czech Rep. | 22 |
| TUR: Turkey | 23 |
| ZAF: South Africa | 24 |
| TWN: Taiwan | 25 |

| Country/Region | Code |
|----------------|------|
| RUS: Russia | 26 |
| BRA: Brazil | 27 |

- Country/region setting using the FG harness on the NCU board
These country/region require code setting on the NCU using the FG harness.
All other countries/regions have only W1 connection on the board.

| | | | | | | | | | | | | | | | |
|-----|-----|-----|-----|-----|-----|-----|-----|-----|-----|-----|-----|-----|-----|-----|-----|
| DEU | GBR | NLD | ITA | AUT | BEL | CHE | SWE | DNK | NOR | FIN | PRT | FRA | ESP | GRC | IRL |
| W2 | W2 | W2 | W1 | W2 | W2 | W2 | W2 | W1 | W2 | W1 | W2 | W2 | W2 | W2 | W2 |

| | | | | | | | | | | | | |
|-----|-----|-----|-----|-----|-----|-----|-----|-----|-----|-----|-----|-----|
| ZAF | SGP | HKG | AUS | NZL | RUS | POL | HUN | CZE | TUR | CHN | RUS | BRA |
| W2 | W2 | W2 | W2 | W2 | W2 | W2 | W2 | W2 | W2 | W2 | W2 | W2 |

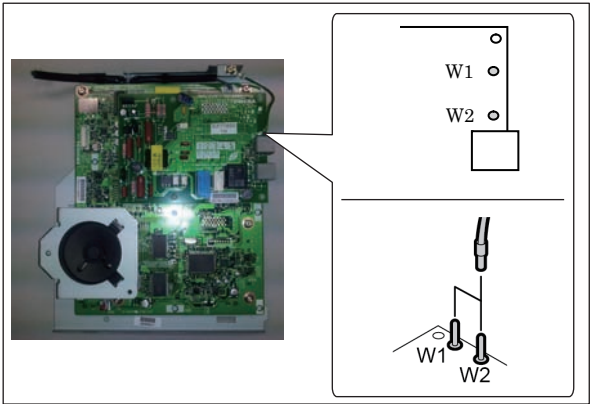


Fig. 4-1

5. FIRMWARE UPDATING

The FAX firmware FAX Function (T.30 protocol and line control) has been installed in the ROM on the FAX board. When updating the firmware to the latest version is required or the equipment does not operate properly due to the damage of the firmware for some reason, the firmware can be updated by using the download jig (K-PWA-DLM-320).

<<Update procedure>>

Important:

- Before updating the FAX firmware, make sure to print out the current Function List for Maintenance, Function List (ADMIN), Phone Book Number Information and Group Number information. In case the updating is failed and the registered information of the users is lost for some reason, re-register the user information referring to the lists and recover it.
- Confirm the following items before turning OFF the power of the equipment. Turning OFF the power may clear the data below.
 - Confirm that the "MEMORY RX" LED is OFF and there are no memory reception data.
 - Print the "Mailbox/Relay box report" and then confirm that there are no F code data.
 - Press the [JOB STATUS] button to display the screen and then confirm that there are no memory transmission data.

- (1) Install the ROM to the download jig.
Make sure the direction is correct.

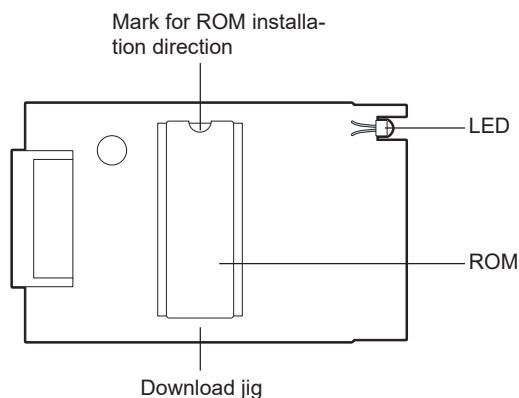


Fig. 5-1 [Jig board: K-PWA-DLM-320]

- (2) Turn OFF the power of the equipment.
- (3) Remove the right side cover.
 - e-STUDIO287CS/347CS/407CS
Refer to steps 4 to 8.
 - e-STUDIO477S/527S
Refer to steps 9 to 15.

- (4) [MC760/MC770/MC780/MPS3537mc/MPS4242mc/ES7480MFP]
Open the scanner and top cover. Remove the two screws [1] and two screws [2].

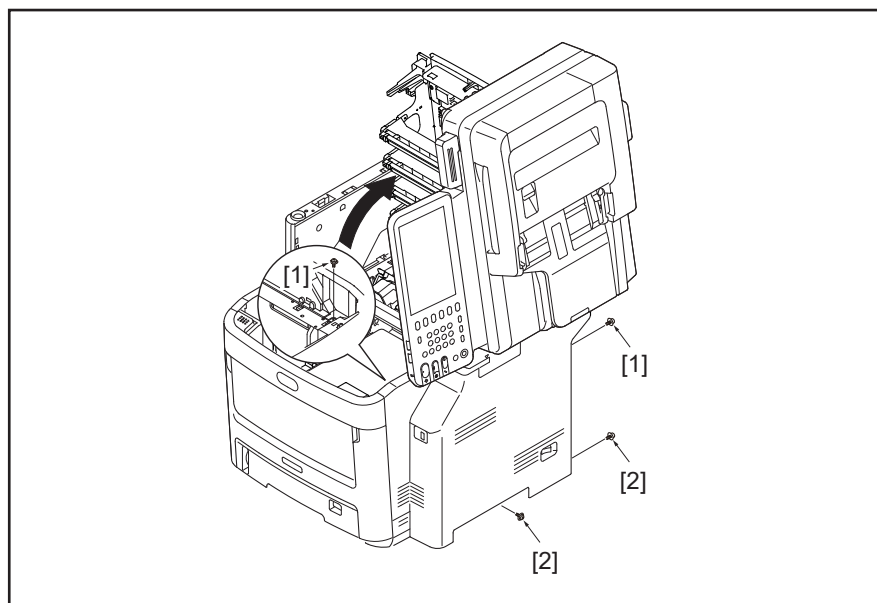


Fig. 5-2

- (5) Release 2 latches.



Fig. 5-3

(6) Release 2 latches.



Fig. 5-4

(7) Release the latch.



Fig. 5-5

- (8) Close the scanner and top cover, then open the feeder unit. Remove the right side cover [1]. When removing the cover, proceed to step 16.

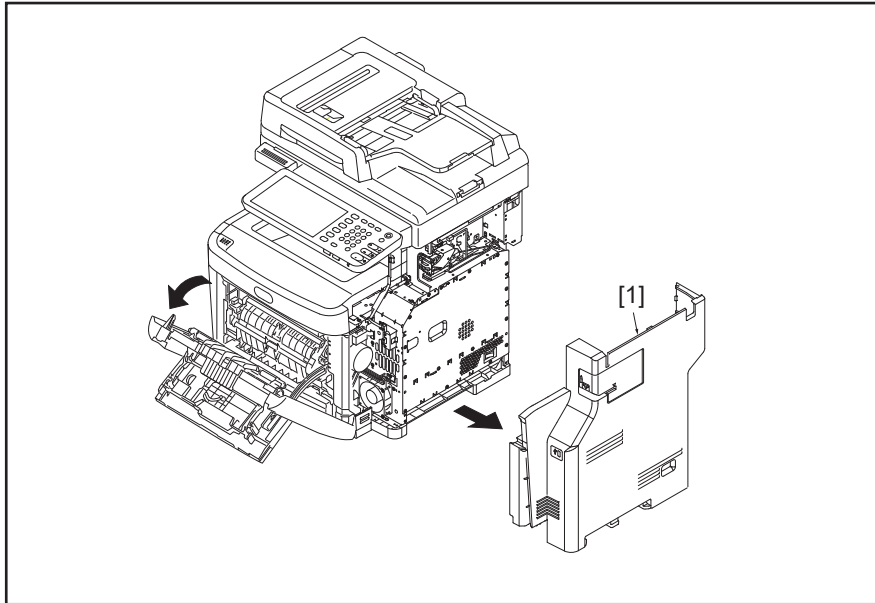


Fig. 5-6

- (9) [MB760/MB770/MPS5502mb]
Remove two screws.



Fig. 5-7

(10) Remove the screw located at the bottom of the right side cover.

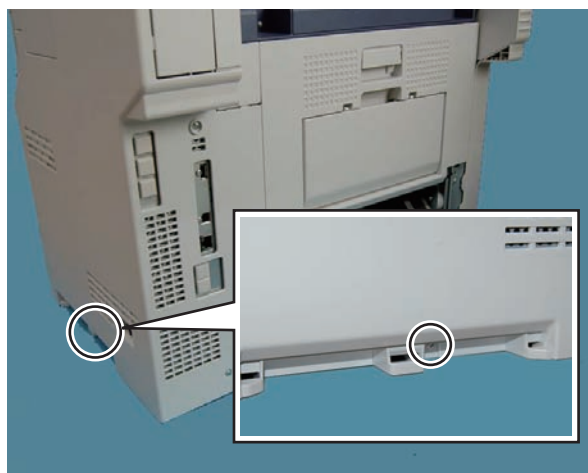


Fig. 5-8

(11) Open the front cover and remove two screws.



Fig. 5-9

(12) Release 2 latches.

- * As shown in the figure, insert a flathead screwdriver into the groove and push it in the direction of the arrow to release the latches.

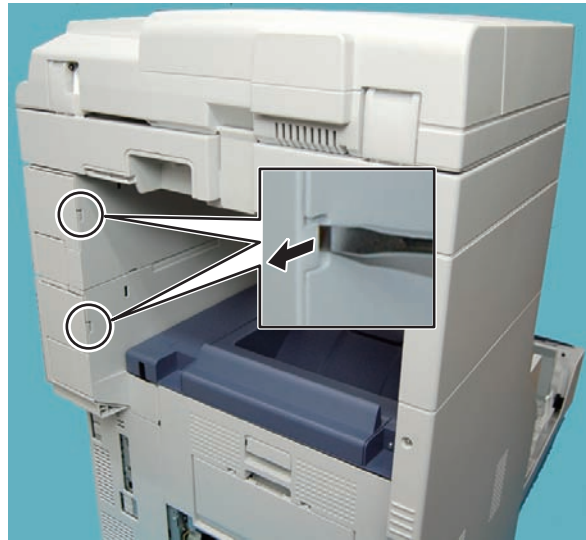


Fig. 5-10

Note:

When using tools, be sure not to put your face and hands in the direction in which force will be applied; otherwise this could result in injury. In addition, be sure not to damage the cover.

(13) Release 2 latches.

- * As shown in the figure, insert a flathead screwdriver into the groove and push it in the direction of the arrow to release the latches.



Fig. 5-11

Note:

When using tools, be sure not to put your face and hands in the direction in which force will be applied; otherwise this could result in injury. In addition, be sure not to damage the cover.

(14) Release the latches (I) and (II).

- * As shown in the figure, insert a flathead screwdriver into the groove and push it in the direction of the arrow to release the latches.



Fig. 5-12

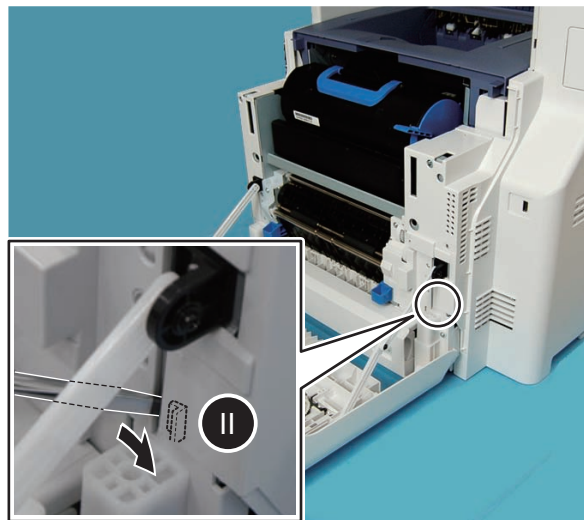


Fig. 5-13

Note:

When using tools, be sure not to put your face and hands in the direction in which force will be applied; otherwise this could result in injury. In addition, be sure not to damage the cover.

- (15) Pull the bottom of the cover outward, release the latch, and remove the cover.
When removing the cover, proceed to step 16.

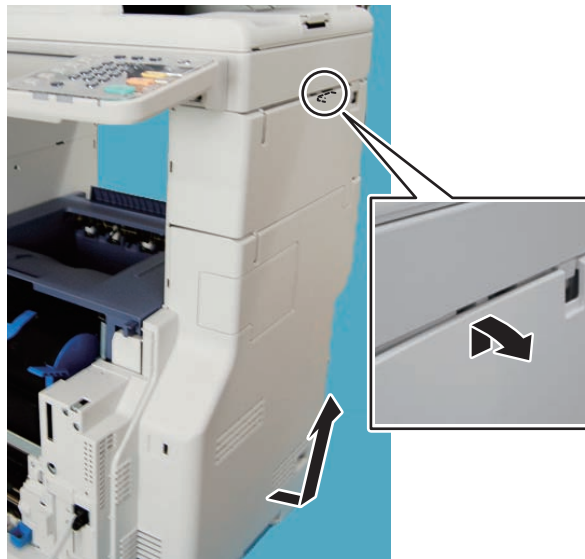


Fig. 5-14

- (16) Connect the download jig [1] with the jig connector [2] on the FAX board.

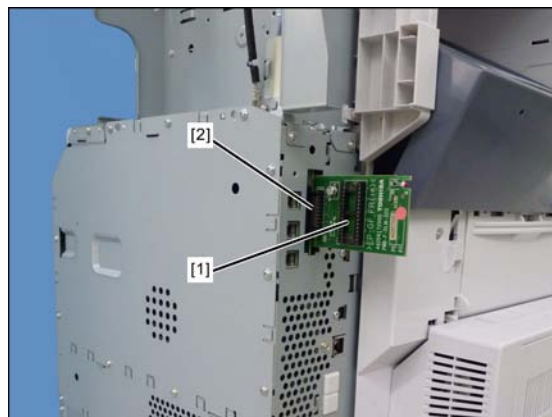


Fig. 5-15

- (17) Turn ON the power while [0] button and [8] button are pressed simultaneously.
Updating starts automatically and the LED on the download jig lights.
- (18) After the update is completed properly, the LED on the download jig blinks. The LED starts blinking in approx. 30 sec. since the update starts. It is assumed that the update is failed if it does not start blinking even though 1 min. has passed. In this case, turn OFF the power and check the following items. Then, clear the problem and restart updating from the beginning.
- Is the download jig connected properly?
 - Is the ROM installed to the download jig properly?
 - Is the updating data written on the ROM of the download jig properly?
 - Do the download jig and the equipment operate properly?
- (19) Turn OFF the power, then remove the download jig, then install the right side cover.

(20) In the FAX Clearing Mode, perform the "FAX Set Up".

- Confirm the destination setting is correct in the Setting Mode (08).
08-9000 : Destination setting of the equipment
08-9001 : Destination setting of the FAX machine
- Turn ON the power while [1] button and [*] button are pressed simultaneously.
- Key in "100".
- Press the [START] button.

Notes:

If the equipment does not work properly after the operation (8), follow the procedure below and then perform the "Clearing the image data" in the FAX Clearing Mode to erase the image data in the memory.

- Confirm the destination setting is correct in the Setting Mode (08).
08-9000 : Destination setting of the equipment
08-9001 : Destination setting of the FAX machine
- Turn ON the power while [1] button and [*] button are pressed simultaneously.
- Key in "102".
- Press the [START] button.

<<Confirmation of the updated data>>

After the updating is completed, check the data version in the Setting Mode (08) to confirm that the data was overwritten properly.

08-9905 : FAX firmware version

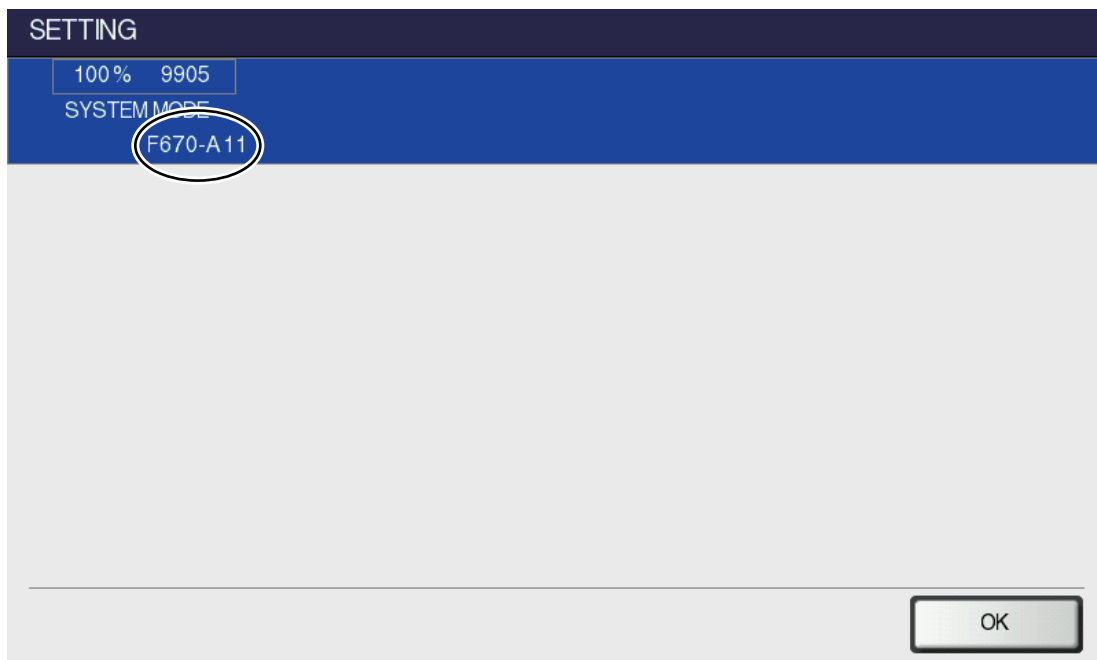


Fig. 5-16